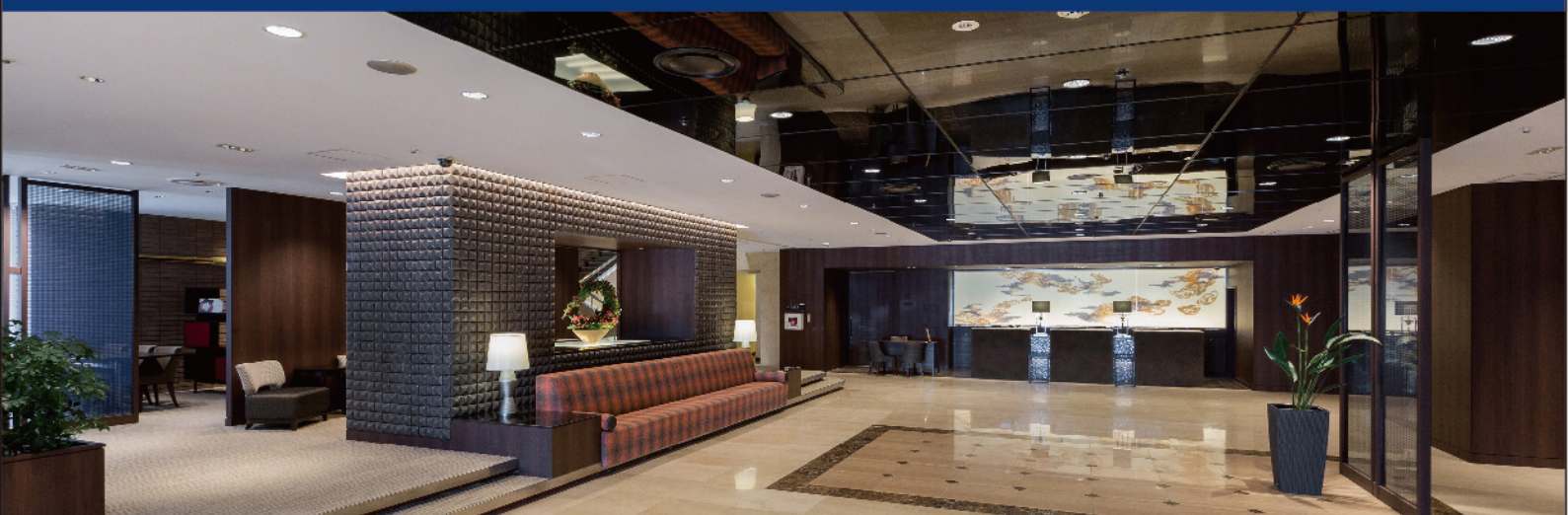


MATSUE EXCEL HOTEL TOKYU

590 Asahi-machi, Matsue-shi, Shimane 690-0003, Japan
TEL: (81) 852-27-0109 / FAX: (81) 852-25-1327



Matsue, home to many historical sites like castles and former samurai homes, is enjoyed also for cruises on scenic Lake Shinji and Hori River. With two airports, Izumo and Yonago, as well as the Sanindo, access is superb. Guestrooms are bright and spacious, and the hotel, located in front of Matsue Station, is convenient for tourists and business travelers.

Check-In 15:00
Check-Out 10:00

Wedding Halls, Beauty Salon with Kimono Fitting Service,
Photo Areas, Vending Machines

40 Parking Spaces (Charges Apply)

USP

- All Non-Smoking Rooms
- Location: In Front of Station
- Handmade Croissants

Surrounding Attractions

- Iwami Ginzan Silver Mine – UNESCO World Heritage Site
- Matsue Castle & Izumo-Taisha (Japan National Treasure)
- Adachi Museum of Art – Listed as a three-star site in the Michelin Green Guide Japan



ACCESS

1

JR MATSUE
STATION
(NORTH EXIT)



By Foot

3 mins

MATSUE EXCEL
HOTEL TOKYU



2

YONAGO
AIRPORT



Airport Bus

40 mins

JR MATSUE
STATION
(NORTH EXIT)

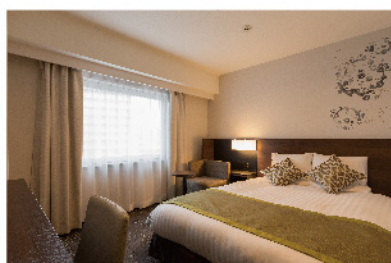
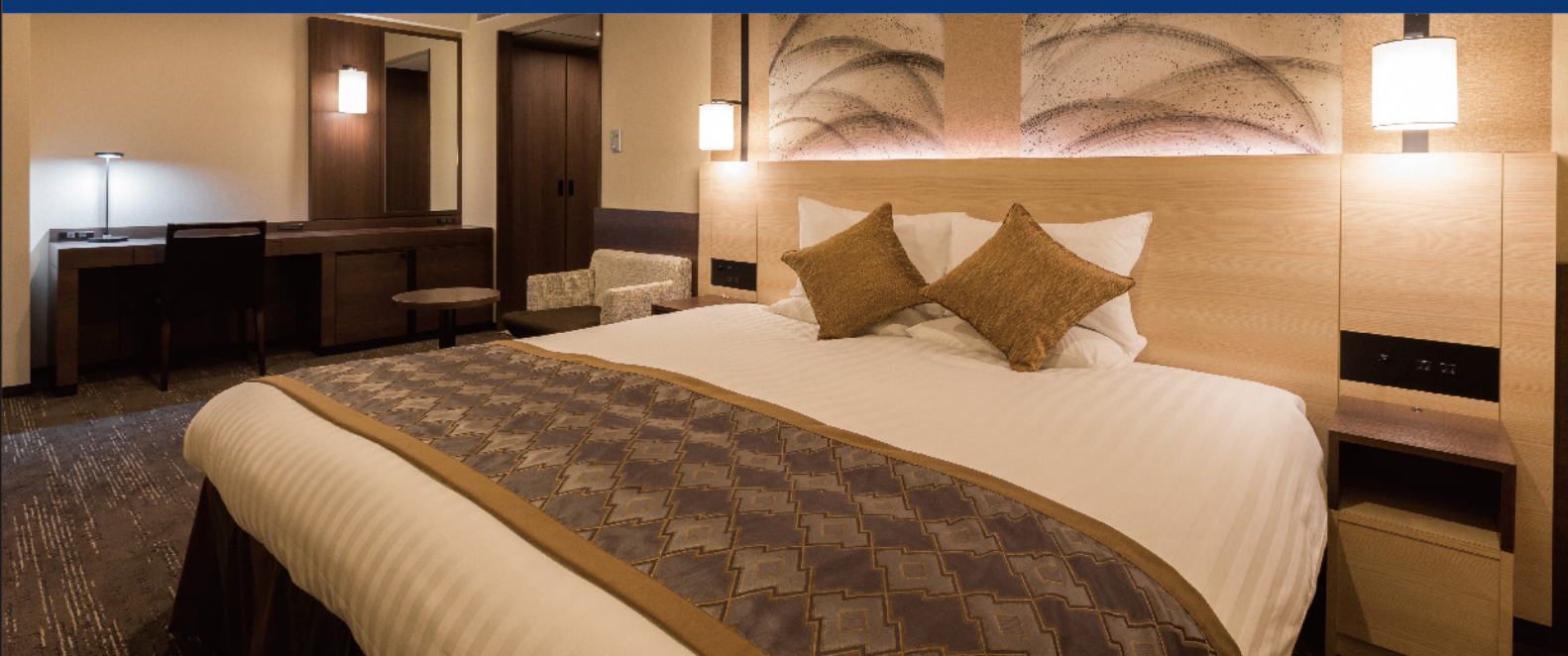


By Foot

3 mins

MATSUE EXCEL
HOTEL TOKYU





GUEST ROOMS INFORMATION

TYPE	NO. OF ROOMS	SIZE (m ² /ft ²)	BED SIZE (cm)
Single	61	14.9 / 160	160x195
Twin	93	17.0~ / 183~	From 110x195
Double	8	17.0~ / 183~	From 160x195
Suite	1	53.1 / 572	120x203

*All Guest Rooms are equipped with Wi-Fi Internet Connection

BANQUET HALLS & MEETING ROOMS

NAME	AREA (m ² /ft ²)	HEIGHT (m/ft)	CAPACITY				
			BANQUET	RECEPTION	CLASSROOM	THEATRE	Conference
Oak Room (Divisible)	326 / 3509	3.2 / 10.5	200	250	225	440	96
Ivy Room (Divisible)	83 / 893	3.1 / 10.2	40	50	42	81	36
Eternal	75 / 807	3 / 9.8	40	50	42	81	36
Miyabi	52 / 560	3.1 / 10.2	30	30	30	42	24
Function Room: Maple	33 / 355	2.4 / 7.9	12	-	12	20	-

*All Banquet Halls are equipped with Wi-Fi Internet Connection



RESTAURANTS

Western Casual Restaurant, MOSORO

*Room Service Not Available

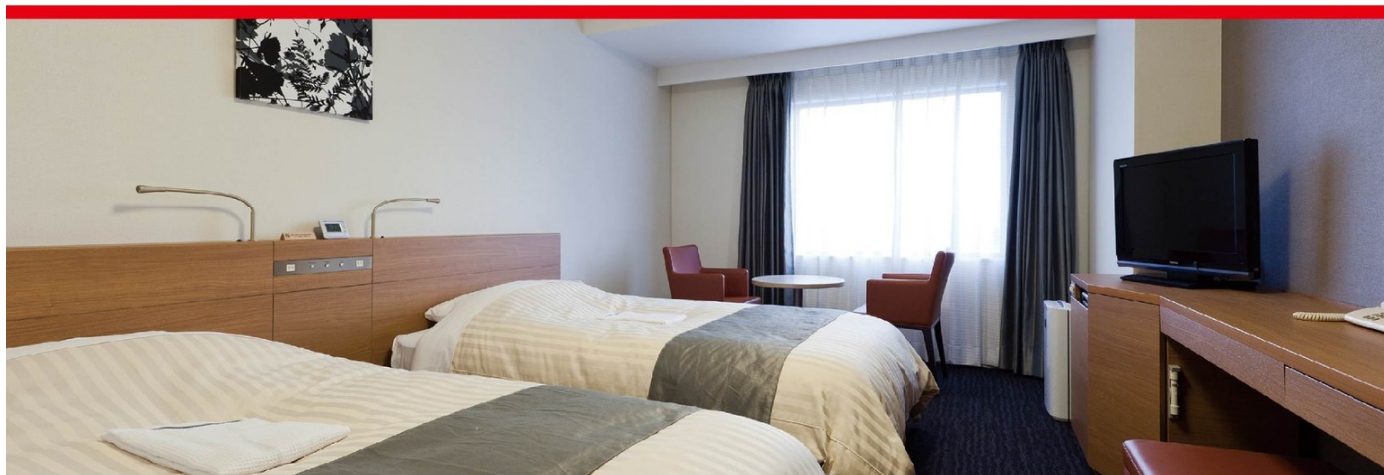
Amadeus	Apollo/Galileo	Sabre	Worldspan
IZOMEH	D9677	315509	IZOME

For more information, please visit us at https://www.tokyuhotelsjapan.com/en/hotel/TE/TE_MATUE/index.html



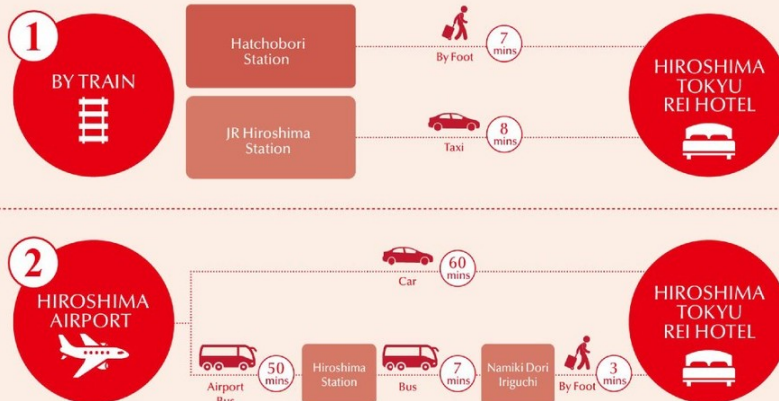
HIROSHIMA TOKYU REI HOTEL

10-1, Mikawa-cho, Naka-ku, Hiroshima-shi, Hiroshima 730-0029, Japan
TEL: (81) 82-244-0109 / FAX: (81) 82-245-4467



Hiroshima, city of water and greenery, has six rivers coursing through it. There are numerous historical sites, including Miyajima and the Hiroshima Peace Memorial. It's also an economic and cultural hub in the Chugoku region that attracts many tourists and businesspeople. Set on Heiwa-dori, Hiroshima Tokyu REI is a high-level business hotel offering refined service for luxuriant relaxation.

ACCESS



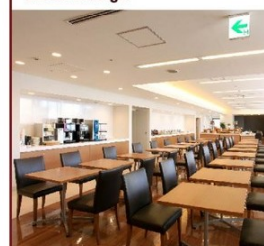
GUEST ROOMS INFORMATION

TYPE	NO. OF ROOMS	SIZE (m ² /ft ²)	BED SIZE (cm)
Single	163	15.3~ / 165~	140x195
Twin	59	20.8~ / 224~	120x195
Triple	7	36.5~ / 393~	120x195
Double	7	21.6~ / 233~	160x195
Executive Twin	1	46.8 / 504	120x195
Other	2	21.6 / 233	140x195

*All Guest Rooms are equipped with Wi-Fi and LAN Access Internet Connection

RESTAURANTS

Guest Lounge



*Room Service Not Available

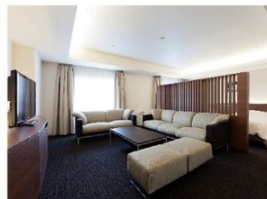
- Check-In 15:00
- Check-Out 10:00
- 25 Parking Spaces (Charges Apply)
- Laundry Room, PC Corner, Vending Machines

USP

- History • Scenery

Surrounding Attractions

- Itsukushima Shrine
- Hiroshima Peace Memorial (World Cultural Heritage Site)
- Hiroshima Castle

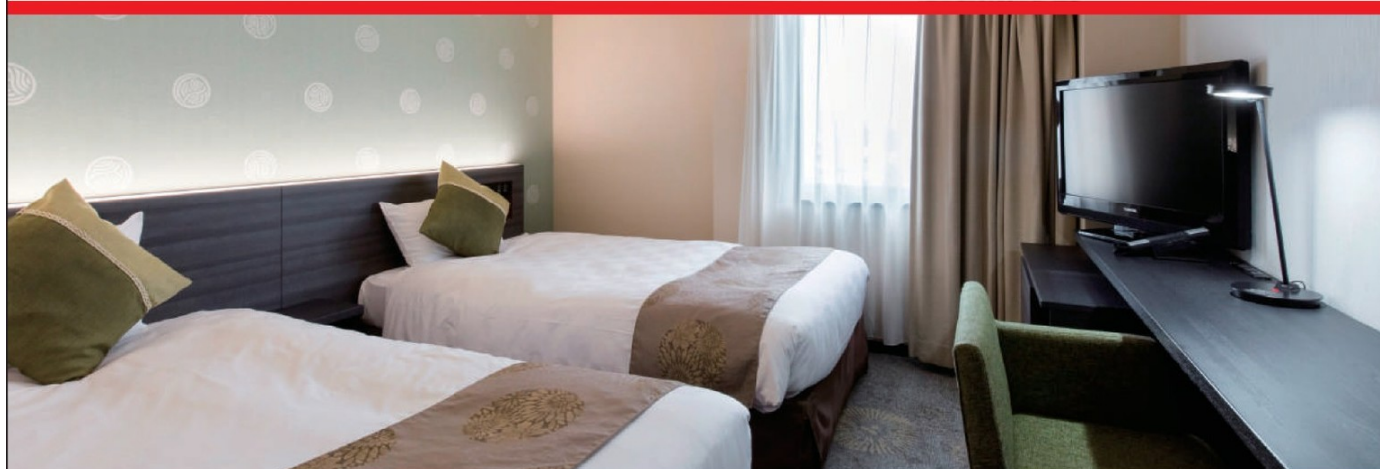


For more information, please visit us at <https://www.tokyuhotelsjapan.com/global/hiroshima-r/>



TAKAMATSU TOKYU REI HOTEL

9-9, Hyogomachi, Takamatsu-shi, Kagawa 760-0024, Japan
TEL: (81) 87-821-0109 / FAX: (81) 87-821-0291



Takamatsu, a former castle town, boasts historical sites like grandiose Takamatsu Castle, splendid Japanese gardens, and Ritsurin Park. With the Akashi Kaikyo Bridge, airline and ocean routes, Takamatsu is easily accessible from all over Japan. And last but not least is the nationally acclaimed Takamatsu specialty and taste treat: Sanuki udon.

- Check-In 15:00
Check-Out 10:00
- 40 Parking Spaces (Charges Apply)
- Restaurants, Banquet Halls, Shops, Vending Machines

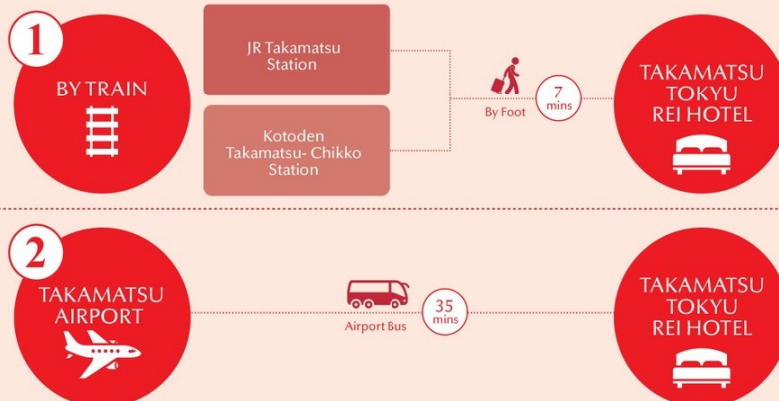
USP

- City of Scenic Beauty
- Treasure of Natural Materials
- A gateway to Shikoku

Surrounding Attractions

- Takamatsu Castle (One of the 3 Water Castles)
- Ritsurin Garden (A 3-Star Green Michelin Attraction)

ACCESS



GUEST ROOMS INFORMATION

TYPE	NO. OF ROOMS	SIZE (m ² /ft ²)	BED SIZE (cm)
SINGLE	53	13.7~ / 147~	From 110x195
TWIN	58	18.3~ / 197~	110x195
DOUBLE	79	15.1~ / 162.5~	From 140x195
TRIPLE	1	40 / 431	110x195

*All Guest Rooms are equipped with Wi-Fi and LAN Access Internet Connection

RESTAURANTS

Western Casual, SHANGRI-LA



*Room Service Not Available

BANQUET HALLS & MEETING ROOMS

NAME	AREA (m ² /ft ²)	HEIGHT (m/ft)	CAPACITY			
			BANQUET	RECEPTION	CLASSROOM	THEATRE
Meeting Room 1 (Divisible)	169 / 1819	2.4 / 25.8	80	120	100	150
Meeting Room 2 (Divisible)	60 / 646	2.4 / 25.8	24	30	20	40

*All Banquet Halls are equipped with Wi-Fi Internet Connection

Amadeus	Apollo/Galileo	Sabre	Worldspan
TAKTTH	D9995	315511	TAKTT

For more information, please visit us at <https://www.tokyuhotelsjapan.com/global/takamatsu-r/>



MATSUYAMA TOKYU REI HOTEL

3-3-1, Ichiban-cho, Matsuyama-shi, Ehime 790-0001, Japan
TEL: (81) 89-941-0109 / FAX: (81) 89-934-3725



Matsuyama, Shikoku's largest city, faces the Seto Inland Sea and has a warm climate. Matsuyama Tokyu REI is south of Matsuyama Castle and near Dogo onsen, Japan's oldest hot springs and Matsuyama's source of pride. Guestrooms are built for functionality and decorated in modern, sophisticated themes.

- Check-In 15:00
- Check-Out 10:00
- 30 Parking Spaces (Charges Apply)
- Restaurants, Vending Machines

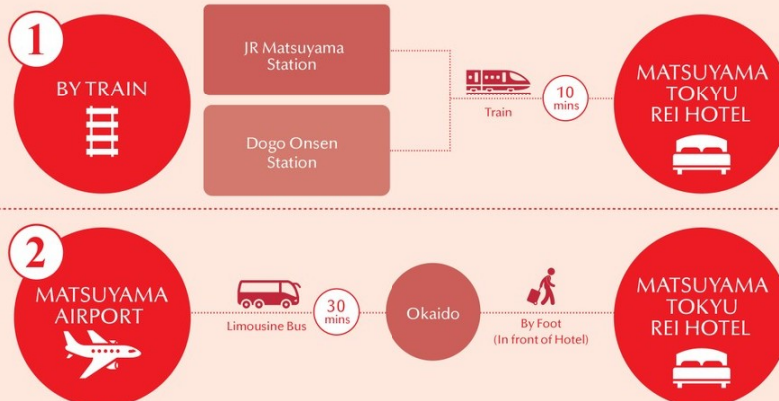
USP

- Japan's oldest Hot Springs • Cuisine

Surrounding Attractions

- Matsuyama Castle
- Shimanami Kaido
- Dogo Onsen

ACCESS



GUEST ROOMS INFORMATION

TYPE	NO. OF ROOMS	SIZE (m ² /ft ²)	BED SIZE (cm)
SINGLE	112	15.2~ / 164~	140x195
TWIN	42	22.5 / 242	120x195
DOUBLE	66	16.8~ / 181~	140x195
DELUXE TWIN	1	45.7 / 492	120x195
SUPERIOR ROOM	22	30.4 / 327	120x195

*All Guest Rooms are equipped with Wi-Fi and LAN Access Internet Connection

RESTAURANTS

Western Casual, PINO MONTE



*Room Service Not Available



Amadeus	Apollo/Galileo	Sabre	Worldspan
MYJMT	D9748	315519	MYJMT

For more information, please visit us at <https://www.tokyuhotelsjapan.com/global/matsuyama-r/>