

Prayer Space

Nikko has some prayer spaces available for the sake of Muslim guests. You are expected to look up opening hours for each.



01

Kinugawa Park Hotels

Non guest also can use prayer space. Waterplace for ablution, prayer room, Qibla are also available.

B-2 / 1409 Ohara, Kinugawa-onsen, Nikko

■ 5 minutes walk from Kinugawa-onsen Station



02

Tobu World Square

Non guest also can use prayer space. Waterplace for ablution, prayer room, Qibla are also available.

B-2 / 209-1 Kinugawasonsen Ohara, Nikko

■ Take a 5-minute bus ride from the Kinugawa-onsen Station to the

● Tobu World Square Error bus stop, from which it is very close

Close to the Tobu World Square Station



03

MASUYA

Non guest also can use prayer space. Waterplace for ablution, prayer room, Qibla are also available.

B-4 / 2482, Chugushi, Nikko

■ Take a 45-minute bus ride from the Tobu Nikko Station to the

● Chuzenji onsen bus stop, and walk 15 minutes



04

Tobu Nikko Station

Non guest also can use prayer space. Waterplace for ablution, prayer room, Qibla are also available.

B-2 / 4-3, Matsubaracho, Nikko

■ 10 mins by the Limited Express from Asakusa Station



History & Nature

Nikko, a place with the history of eternity, has a rich harmony of things built by people and things from nature. You can enjoy the real attractiveness of traveling beyond time by only visiting there.

The world heritage symbolizing Nikko Toshogu

The shrine where the first shogun, Tokugawa Ieyasu, was enshrined. Ieyasu founded the Edo bakufu (the last feudal Japanese military government). Richly colored sculptures are seen in key places, and representative decorations of the Yomeimon Gate and the Karamon Gate are breathtakingly beautiful.

A-1 / 2301 Sanmi, Nikko

■ Take a 9-minute bus ride from the Tobu Nikko Station to the

● Omotesando bus stop, and walk 5 minutes



Feel the wind on your face on this comfortable boat ride Chuzenji Lake Boat cruise

Sightseeing boat cruise around the natural beauty of Lake Chuzenji. You can experience a different charm of Nikko from the comfortable boat.

B-4 / 2478 Chugushi, Nikko

■ Take a 45-minute bus ride from the Tobu Nikko Station to the

● Chuzenji onsen bus stop, and walk 5 minutes



Height of 97m, natural dynamism Kegon Falls

This big waterfall boasts one of the prominent sights of beauty of Japan. The way the water falls down at once from a 97 m high cliff conveys the greatness and intensity of nature.

B-4 / 2479-2 Chugushi, Nikko

■ Take a 45-minute bus ride from the Tobu Nikko Station to the

● Chuzenji onsen bus stop, and walk 5 minutes



Run powerfully with the whistle blowing SL "Taiju"

The tourist SL, revived to convey the railroad culture to the present. You will be fascinated by its powerful appearance of the steam train runs blowing a whistle.

E-4 / 1110, Imachi, Nikko

E-2 / 234-1 Ohara, Kinugawa-onsen, Nikko

E-2 / 1390 Ohara, Kinugawa-onsen, Nikko

■ Shimo-imachi Station, Tobu World Square Station, Kinugawa-onsen Station



The only place where you can see all of Nikko Akechidaira Ropeway

It takes about three minutes to get from Akechidaira to the observatory using the ropeway. From the window you can see a natural panoramic view. Lake Chuzenji and the Kegon Waterfall will be right below you, and viewing them from here is a unique experience different from seeing them on ground.

B-4 / 709-5 Fukasawa Hosoomachi, Nikko

■ Take a 35-minute bus ride from the Tobu Nikko Station to the

● Akechidaira bus stop, from which it is very close



The most scenic spot in Nikko that shines beautifully Lake Chuzenji

A scenic spot representing Nikko included in the 100 best sceneries in Japan. It is a spot where you can see the photogenic scenery as the expression reflected on the lake changes every season.

A-4 / Chugushi, Nikko

■ Take a 45-minute bus ride from the Tobu Nikko Station to the

● Chuzenji onsen bus stop, and walk 3 minutes



Muslim-Friendly Restaurant / Cafe

Nikko has some resataurant for Muslim friendly menus so that Muslim guests can also enjoy. *Please ask the staff when you order Muslim-friendly menu.

Free Wi-Fi available

Offers You Recommended Local Foods such as Soba, Udon, and Yuba Tobu World Square "Heian"

Heian located in Tobu World Square prepares non-pork&non-alcohol menu for the sake of Muslim guests. Local famous "Yuba (tofu skin)" is cooked for tempura or sashimi. It is good to put it into Soba and Udon as well. Prayer room is also built in the park.

E-2 / 209-1 Kinugawasonsen Ohara, Nikko

■ Take a 5-minute bus ride from the Kinugawa-onsen Station to the

● Tobu World Square Error bus stop, from which it is very close

Close to the Tobu World Square Station



Authentic Sushi and Seasonal Japanese Dishes are Strongly Recommended Yaccosushi

Yaccosushi is a longstanding 3rd generation sushi shop in Nikko city, and their chef has been working career in overseas for couple of years. They use seasonal ingredients which are produced in enriched nature in four seasons.

E-4 / 20-7, Imachicho, Nikko

■ 15 minutes walk from Tobu Shimo-imachi Station



Japanese Restaurant that Offers Fresh Fish Caught in Chuzenji Lake MASUYA

Masuya serves traditional local cuisines with Yuba (tofu skin) famous in Nikko, Kokanee and Smelt caught in Chuzenji Lake. Just in front of Chuzenji Lake, you will be surly satisfied with natural foods made in Nikko.

B-4 / 2482, Chugushi, Nikko

■ Take a 45-minute bus ride from the Tobu Nikko Station to the

● Chuzenji onsen bus stop, and walk 15 minutes



Nikko's Traditional Japanese Snack (Red Bean Jelly) as Souvenir! Watahan

Watahan has been manufacturing Red Bean Jelly using selected ingredients and fresh water without any chemicals since 1787. How about buying them for your family or friends?

E-2 / 798, Shimotatsuishimachi, Nikko

■ Take a 3-minute bus ride from the Tobu Nikko Station to the

● Nikko Kyodo Center moe bus stop, and walk 1 minutes.



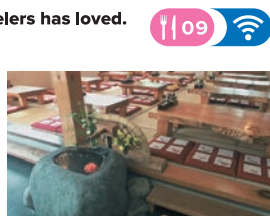
Have a Temporary Break in a Space Where Travelers has loved. Sanbonmatsu Chaya

Please drop by to have a break whenever during your trip. They are offering local homemade dishes, and you can bring souvenirs that can be found only here!

A-3 / 2493, Chugushi, Nikko

■ 60 mins by bus (for Yumoto Onsen) from Tobu Nikko Station, stop at

● Sanbonmatsu

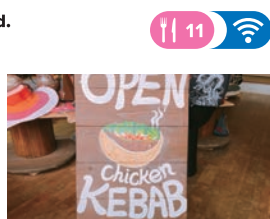


Kebab shop selling goods from all over the world. Kebab TUBES

In Kebab TUBES, they sell ethnical souvenirs and goods that the friendly owner brought from all over the globe. You can shop them while eating delicious kebab!

B-2 / 12-9, Matsubaracho, Nikko

■ 5 minutes walk from Tobu Nikko Station



Aroma-rich coffee brewed with the famous mineral water Nikko Coffee Goyouteidori

You can taste an extraordinary cup of home-roasted coffee brewed with the famous water at an atmospheric cafe which once was an old traditional house. Handmade sweets and shaved ice are also popular. Only shaved ice is no pork, no alcohol menu.

A-4 / 3-13 Honcho, Nikko

■ Take a 7-minute bus ride from the Tobu Nikko Station to the

● Watsuzanab Iriguchi bus stop and walk 2 minutes



Good Option to Drop by Here to Have a Lunch or a Cup of Coffee in a Cozy Space Earthan's

Cafe&restaurant very near Tobu Nikko Station. Accessibility is quite convenient. So, how about having a lunch or a cup of coffee in such a comfortable atmosphere?

B-2 / 2-8, Aiocho, Nikko

■ 5 minutes walk from Tobu Nikko Station



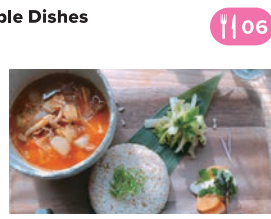
Enjoy the Best-Ever Natural & Organic Vegetable Dishes Shizensaryo Meguri

Shizensaryo Meguri serves the natural&organic dishes that are made from vegetables without any chemicals. Their seasoning is traditional and natural that makes dishes the best condition.

B-1 / 909-1, Nakahatsumachi, Nikko

■ Take a 5-minute bus ride from the Tobu Nikko Station to the

● Hatsuishi machi bus stop, and walk 2 minutes.



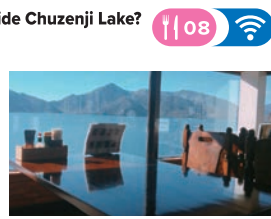
Why don't you have a break with a cup of coffee beside Chuzenji Lake? Coffee Shop Spoon

You will be relaxed by the scenery of Chuzenji Lake from the window as if it is drawn on the canvas. It has to ease your stress or fatigue. A coffee at this place is the best with such a nice atmosphere.

B-4 / 2478, Chugushi, Nikko

■ 60 mins by bus (for Yumoto Onsen) from Tobu Nikko Station, stop at

● Chuzenji Yubinoyoku



Let's have a lunch in the most accessible location from Tobu Nikko Station. Kamaya Café du Reverbere

Kamaya Café du Reverbere is a restaurant just in front of Tobu Nikko Station. You can choose Muslim friendly menu from a few options. Crushed frozen Nikko's strawberry is a must try!

B-2 / 12-8, Matsubaracho, Nikko

■ 30 seconds walk from Tobu Nikko Station



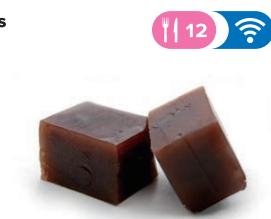
Nikko's Red Bean Jelly with Selected Ingredients and Traditional Skills. Yoshidaya

You can choose to eat from three flavors, original/salt/red beans. Traditional flavor is their pride.

B-1 / 903, Shimotatsuishimachi, Nikko

■ Take a 5-minute bus ride from the Tobu Nikko Station to the

● Hatsuishi machi bus stop and walk 1 minute



Hotel that Offers Muslim-friendly Menu

Reservation is needed for Muslim-friendly menu

Hotel with 140 Years History where Former Celebrities also Stayed Nikko Kanaya Hotel

Nikko Kanaya Hotel has been lasted since Meiji Era, and its original atmosphere has still remained since then. It is known as a hotel where celebrities such as Helen Keller, Albert Einstein also stayed. Halal meal, private bath are available.

A-1 / 1300, Kamihatushimachi, Nikko

■ Take a 5-minute bus ride from the Tobu Nikko Station to the

● Shinyo bus stop and walk 2 minutes



15

Muslim-Friendly Hotel in Kinugawa Onsen! Halal Meal, Prayer Room, Private Bath are Available! Kinugawa Park Hotels

The room is divided into 4 types that provide you a distinctive and different atmosphere. Kitchenware, tableware, and storage are exclusively separated for Halal. Prayer room and private bath (onsen) are also prepared.

E-2 / 1409 Ohara, Kinugawa-onsen, Nikko

■ 5 minutes walk from Tobu Kinugawa Onsen Station



16

Enjoy the Best Onsen Directly from Hot Spring Source! SPA VILLAGE KAMAYA

Only 3 mins walk from SPA VILLAGE KAMAYA brings you to Yumoto yubatake (hot spring source). You can take the best onsen straightly from the origin of onsen, which contains healthy substances for your body and relaxation. They have private bath and Halal meal.

A-2 / 2549, Yumoto, Nikko

■ 90 mins by bus (for Yumoto Onsen) from Tobu Nikko Station, stop at

● Yumoto Onsen

Famous Hotel near Chuzenji Lake Suitable for Sightseeing in Oku-Nikko Chuzenji Kanaya Hotel

Chuzenji Kanaya Hotel is located just beside Chuzenji Lake, that is the best place to travel around Oku-Nikko. Like Nikko Kanaya Hotel, a lot of tourists stay and enjoy nature, history, gourmet, and onsen. Halal meal is available.

A-3 / 2482, Chugushi, Nikko

■ Take an 1-hour bus ride from the Tobu Nikko Station to the

● Chuzenji Kanaya Hotel moe bus stop, and walk 3 minutes



17

Next to "Nikko Toshogu Shrine". Japanese Hotel in the site of the World Heritage. Nikko Tokanso Hotel

Nikko Tokanso Hotel is a hotel located in the World Heritage site. You can walk to Nikko Toshogu Shrine, Rinnoji Temple, Futatabi-jinja Shrine. They serve Non-pork, Non-alcohol lunch box if you contact 3 days beforehand. Prayer room is available during daytime.

A-1 / 2335, Sanmi, Nikko

■ 60 minutes by bus (for Yumoto Onsen) from Tobu Nikko Station, stop at

● Shinyo



18

Guesthouse full of Experience and People (Open from 1st Sept. 2018) Guesthouse fete

fete is a guesthouse where various people gather from all over the world. Please note that interesting events are also held there periodically to excite your journey. Halal and vegan menu, prayer room are available. (Image is for illustration purposes)

B-4 / 786 Shimotatsuishimachi, Nikko

■ Take a 5-minute bus ride from the Tobu Nikko Station to the

● Nikko Kyodo Center moe bus stop, and walk 3 minutes



Entertainment & Activities

You can enjoy experiencing Japanese cultural activities such as kimono rental and making local crafts, or feeling nature through Kinugawa line down. It has a lot of spots that you can enjoy yourself.



01

Realistic miniature world! Take a tour around the miniature world Tobu World Square

When you get lost in the theme park, it is a photogenic space with miniatures. You will be welcomed by 102 buildings of 22 countries, including world heritage sites reproduced on the 1:25 scale.

E-2 / 209-1 Kinugawasonsen Ohara, Nikko

■ Take a 5-minute bus ride from the Kinugawa-onsen Station to the

● Tobu World Square Error bus stop, from which it is very close

Close to the Tobu World Square Station



02

Play in the snow at the family skiing area Nikkoyumoto Ski Area

A ski resort featuring beginner courses with gentle slopes. It is the best spot to visit in winter; it is open from late December to the end of March.

A-2 / Yumoto Onsen, Nikko

■ Take an 85-minute bus ride from the Tobu Nikko Station to the

● Yumoto Onsen bus stop, and walk 5 minutes

■ Take an 85-minute bus ride from the Tobu Nikko Station to the



03

Feel close to the nature of Okunikko Nikko Natural Science Museum

There are plenty of things to see such as a theater introducing the four seasons of Okunikko with powerful images and an exhibition on the local nature.

B-4 / 2480-1 Chugushi, Nikko

■ Take a 45-minute bus ride from the Tobu Nikko Station to the

● Chuzenji onsen bus stop, from which it is very close



04

Enjoy the beauty of the gorge from the boat Kinugawa River Boat Ride

You will be able to feel the calmness and excitement of the Kinugawa River. You will be surrounded by the fascinating dynamism of the gorge in the Kinugawa River and the beautiful scenery.

E-2 / 1414 Kinugawasonsen Ohara, Nikko

■ 4-minute walk from the Kinugawa-onsen Station



05

Experience the spirit of Japan by wearing Kimono Utakata Kimono Rental

Let's change into a Kimono and go out for a special walking experience on the old streets in Nikko. The basic set plan including Kimono and accessories is 3,800 yen for a day.

B-4 / 916 Nakahatsumachi, Nikko

■ Take a 5-minute bus ride from the Tobu Nikko Station to the

● Hatsuishi machi bus stop, and walk 1 minute

Casually experience traditional engraving Murakami Toyohachi Shouten

You can casually experience Nikko carving (Nikko-bori) at the old shop which has preserved the carving skills of Nikko. Make a one-of-a-kind engraving for a memory of your trip.

*Reservation required

B-2 / 256 Matsubaracho, Nikko

■ 1-minute walk from the Tobu-nikko Station



A view like a landscape painting British Embassy Villa Memorial Park

This building was once used as the British Embassy Villa. The view over Lake Chuzenji from the spacious veranda on the second floor gives visitors peace of mind.

B-4 / 2482, Chugushi, Nikko

■ Take a 45-minute bus ride from Tobu Nikko Station to the

● Chuzenji onsen bus stop. From there, walk 30 minutes or take a 5-minute bus ride to the

● Hatsuishi machi bus stop, from which it is very close

</