



BELLUSTAR
TOKYO

A PARTNER OF PAN PACIFIC HOTELS AND RESORTS



BELLUSTAR TOKYO, A Pan Pacific Hotel is a luxury hotel where guests can enjoy special spaces far from the madding crowd down below. Japanese culture is woven into the interiors of guest rooms, while windows seven meters wide offer an amazing panorama of Tokyo spread out before you. The Sky Private Villa on the topmost floors features a restaurant three levels tall that offers stunning views, a spa where one can experience the four seasons and bounty of Japan's soil while surrounded by dramatic sights, and five penthouse suites that offer guests the finest in Japanese-style hospitality. Relax and enjoy yourself in a unique space, surrounded by stunning views on all sides, as far as the eye can see.



Check-in 15:00
Check-out 12:00



Restaurant, Bar, Fitness Gym, Spa, Penthouse,
Penthouse Lounge, Concierge Service



Parking available at TOKYU KABUKICHO TOWER *charges apply

USP

- A panoramic view of Tokyo
- Guest rooms infused with Japanese cultural elements
- A sky spa situated on the hotel's highest level
- A French restaurant boasting a 13-meter high ceiling

Surrounding Attractions

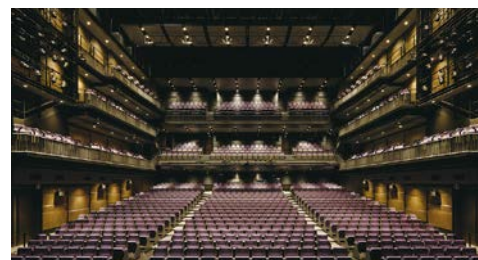
- Kabukicho, 1 min walk
- Omoide Yokochi, 6 min walk
- Golden-Gai, 9 min walk
- Isetan Shinjuku, 9 min walk
- Shinjuku Gyoen National Garden, 15 min
- Tokyo Metropolitan Government, 22 min



Zepp Shinjuku (Tokyo)/ZEROTOKYO



109 CINEMAS PREMIUM SHINJUKU



THEATER MILANO-Za

ACCESS

1

BY TRAIN



BELLUSTAR
TOKYO



2

BY AIR



Haneda Airport



60 min

Narita Airport

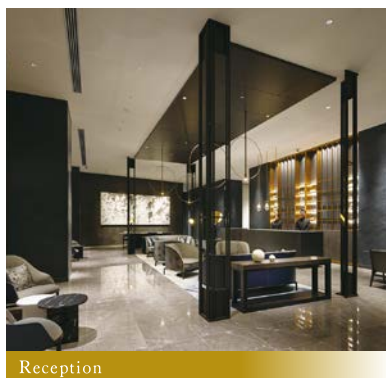


120 min

BELLUSTAR
TOKYO



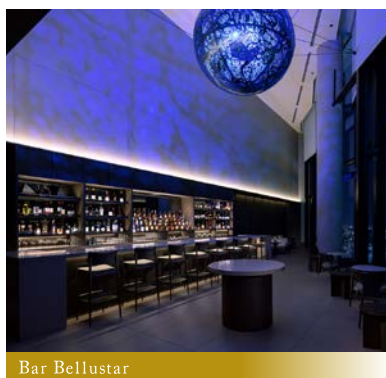
TOKYU HOTELS



Reception



Restaurant Bellustar



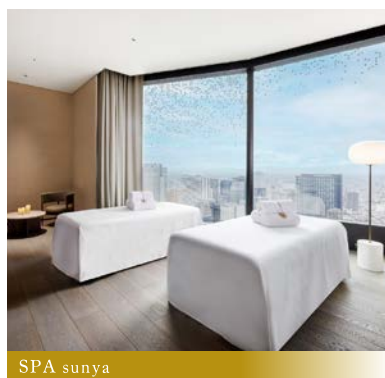
Bar Bellustar



Teppan Ten-yu



Sushi JIN-E



SPA sunya

GUEST ROOMS

| TYPE | NO. OF ROOM | SIZE (m ²) | BED SIZE (cm) |
|--|-------------|------------------------|--|
| LUXURY ROOM (39F-44F) | | | |
| Studio King | 14 | 41-48 | 200×216×1 |
| Studio Deluxe Twin | 2 | 56 | 2pax 120×216×2 3pax 120×216×2 / 100×203×1 |
| Studio Premier King | 26 | 51-55 | 200×216×1 |
| Studio Premier Twin | 30 | 54 | 120×216×2 |
| Junior Corner Suite Twin | 6 | 53 | 2pax 120×216×2 3pax 120×216×2 / 100×203×1 |
| Junior Corner Suite King | 6 | 59 | 200×216×1 |
| Deluxe Suite | 4 | 76 | 2pax 200×216×1 3pax 200×216×1 / 100×203×1 |
| Two Bedrooms Deluxe Suite | 4 | 82 | 200×216×2 |
| PENTHOUSE (45F-47F) | | | |
| sora 天 | 1 | 277 | 240×217×1 |
| tsuki 月 | 1 | 159 | 140×217×2 |
| kaze 風 | 1 | 113 | 200×217×1 |
| tori 鳥 | 1 | 186 | 140×217×2 |
| hana 花 | 1 | 184 | 200×217×1 |
| *All Guest Rooms are equipped with Wi-Fi | | | |

RESTAURANT / BAR / SPA

| NAME | OPERATING HOURS | | CAPACITY |
|------------------------------------|---|--|--|
| Restaurant Bellustar | Lunch 12:00-15:00 (L.O. 14:00) Dinner 17:30-22:00 (L.O. 21:00) | | 36 (Private room for 8 pax available) |
| Bar Bellustar | Weekday 17:00-24:00 (L.O. 23:30) Weekend, PH 13:30-24:00 (L.O. 23:30) | | 58 |
| Teppan Ten-yu | Lunch 12:00-15:00 (L.O. 14:00) Dinner 17:30-22:00 (L.O. 21:00) | | 10 |
| Sushi JIN-E | Dinner 17:30-22:00 (L.O. 20:00) Weekend, PH Lunch 12:00-15:00 (L.O. 14:00) *closed :Mondays | | 9 |
| SPA sunya | 11:00-21:00 (Reception closes at 20:00) | | — |
| *In-room Dining is also available. | | | |

| | | | |
|---------|----------------|--------|-----------|
| Amadeus | Apollo/Galileo | Sabre | Worldspan |
| HNDBTO | H5251 | 600869 | HNDBT |

*For more information, please visit us at www.bellustartokyo.com

160-0021 1-29-1, Kabukicho, Shinjuku-ku, Tokyo TELEPHONE : +81 3 6233 8800 MAIL : enquiry.ppbtk@panpacific.com