

A micro theme park  
filled with puzzles

# TOKYO MYSTERY CIRCUS

CREATED BY **SCRAP**



**The largest of its kind in Japan!**

Real-life interactive games and events such as escape rooms and more.

What is

## TOKYO MYSTERY CIRCUS?

In December 2017, the world's first "theme park of mystery", TOKYO MYSTERY CIRCUS, opened in Tokyo's tourist hotspot – Shinjuku's Kabukicho!  
The entertainment facility offers several real-life interactive games such as:

### Real Escape Game

An escape game where you have to escape from a deadly situation.

### Real Stealth Game

Where you physically infiltrate into an enemy's base to complete your mission.

### Projection Table Game

Where you utilize interactive projection mapping technology to solve puzzles.

### 9 rooms

Use all 5 of your senses to bust out of 9 consecutive unique rooms with an overlaying storyline.

And many other new and exciting real-life games and events!



### TOKYO MYSTERY CIRCUS Master KUMAKEE

The Grandmaster of Tokyo Mystery Circus, the world's largest puzzle-themed entertainment facility.

Follow me!  
@kumakee\_tmc

Official goods  
available!



## The Perfect Guide for Fun

Follow these steps for the best experience!

### STEP 1 Get a Ticket

- ① Want to secure your tickets?  
⇒ Get advanced tickets!
- ② Want to play today?  
⇒ Get on-the-day tickets!

### STEP 2 Be Ready for the Game!

Make sure to arrive on time with all of your team members for a smooth sign in process.

### STEP 3 Let Loose and Have Fun!

Follow all instructions and enjoy the activities to your heart's content!

## How to Get Tickets

Tickets can be  
**PURCHASED  
ONLINE**

Games can be played in  
**ENGLISH or CHINESE**



**View all available games  
and activities here! ▶**

<https://mysterycircus.jp/en/events>



Be sure to read the activity's important points before buying tickets.

### Book and Pay in Person

Visit the ticketing counter and get recommendations for activities that suit you!

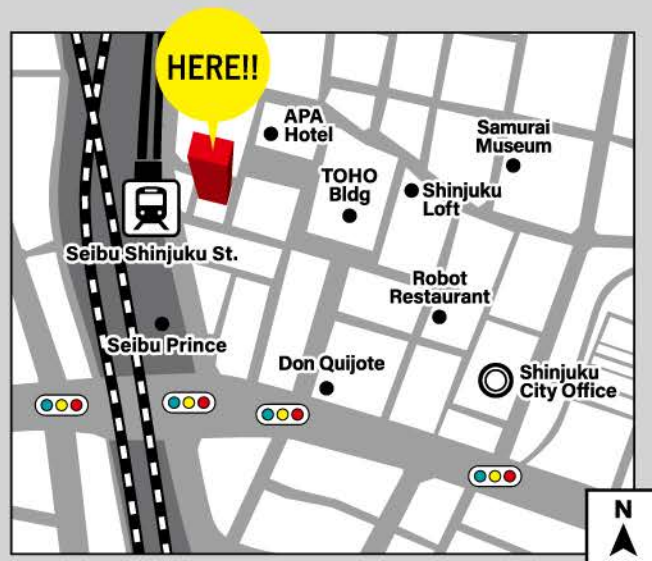
Cash, credit cards, and Alipay are accepted.

### Book and Pay Online

If you have decided on an activity, you can also book and pay through the Tokyo Mystery Circus website. No account creation necessary.



## ACCESS



APM Building B1 to 5th floor, 1-27-5, Kabukicho, Shinjuku, Tokyo, Japan 160-0021

7-minute walk from JR Shinjuku Station East Exit  
2-minute walk from Seibu-Shinjuku Station

Inquiries:

✉ info@mysterycircus.jp

☎ 03-6273-8641 (Weekdays: 11:30-19:00)

\*Inquiries may be answered in Japanese.

 **Check how you can get to us from your location! ▶**



**More info and how to buy tickets:**

**TOKYO MYSTERY CIRCUS** 

<http://mysterycircus.jp/en/>

@T\_MysteryCircus #tokyomysterycircus #love\_tmc



The games and goods with this mark can be played in English or Chinese or both.

# HIMITSU COFFEE

A specialty coffee shop with a unique concept, created for lovers of mysteries and puzzles!

Ice Unicorn

800 JPY



HIMITSU Blend (HOT / ICE) 500 JPY

## What kind of puzzles are there?

For example, what does the below read?



Ask the staff for hints or the answer!

## TMC GOODS SHOP

Get these English puzzles to play with your friends back home! ▶

Find limited edition anime collaboration goods that you can only get here!



◀ Other puzzle-packed products and original goods available too.



## IMPORTANT NOTES

- ✓ No refunds can be made after purchase except for cases where the issue lies with the facility/organizer. Please check carefully before purchasing tickets.
- ✓ Children in elementary school and older will require a ticket.
- ✓ Each activity's age limit may differ based on the nature of the content. **Be sure to check the important points on each activity's webpage for this information before buying tickets.**





## FLOOR GUIDE

5F

### 9rooms

The game series with 9 consecutive rooms is held on this floor.  
Currently two events are available!



4F

### PTG Room / Secret Lab (Small Hall)

Two escape games can be played on this floor. From trending collaboration titles to original games, enjoy the latest events here.



3F

### Real Stealth Area

The Real Stealth Game is held on this floor. Hide your presence and navigate through an enemy base to clear your mission. Live out your dream of being a spy here!



2F

### Mini Real Escape Room / The Lightbulb Bookshop - Lampdour

Experience a quick and casual escape room that can be played solo or in pairs, or check out The Lightbulb Bookshop - Lampdour, on this floor.



1F

### Mystery Atrium

Find the ticket counter, a mysterious cafe, and a shop with fun and exciting products here. A free space that you can enjoy without a ticket.



B1F

### Secret Lab (Large Hall)

Immersive experiences with rich storylines that go beyond that of an escape room are held here. Be transported into a story and spend an unforgettable time here.



Break through room after room of puzzles and magic traps.

Use your magic and wits to overcome all 9 rooms!

Escape From **NINE ROOMS**

## Escape from the Witch's House in the Woods



### Play Style

The newest edition of the popular series, Escape from The NINE ROOMS, which has hosted over 200,000 players!



Time Limit

50min



Total Time Needed

Approximately 60~120 min



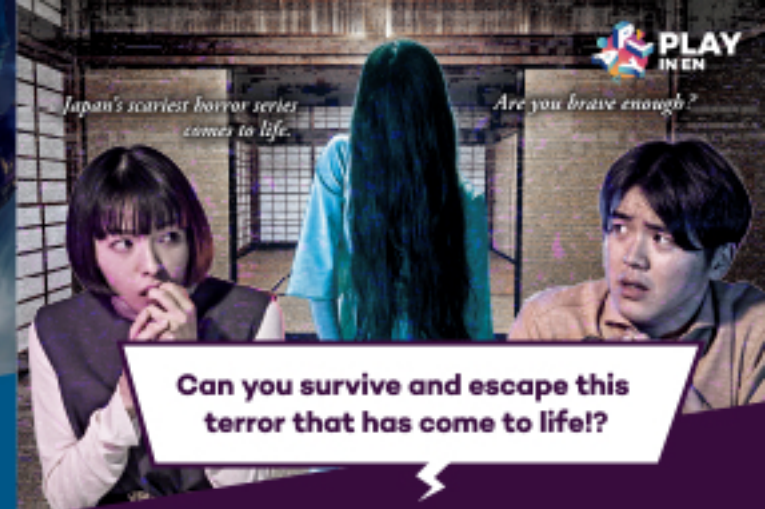
Team Size

Max 4 players (per team)



Price

From 3,000yen (1 person)



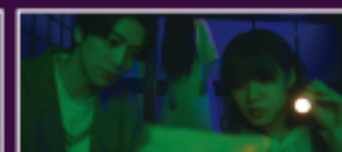
Japan's scariest horror series comes to life.

Are you brave enough?

Can you survive and escape this terror that has come to life?

Real Escape Game × Haunted House

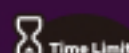
## SADAKO AND THE CURSED VIDEO



©KADOKAWA

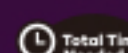
### Play Style

Search the whole house and solve the mystery behind Sadako's curse.



Time Limit

30min



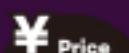
Total Time Needed

Approximately 60~80 min



Team Size

Max 4 players (per team)



Price

From 2,600yen (1 person)

### What is the Real Escape Game × Haunted House?

The famous Sadako from The Ring is finally coming to TOKYO MYSTERY CIRCUS! Endure the fear and suspense of Sadako lurking in the shadows, never knowing when she'll show up, while you search the house for clues to survive her deadly curse.

### What is 9rooms?

9 rooms, 9 puzzles to solve.  
You crack the code and break free from one locked room, only to be locked straight into another.  
Lean into your intuition and let inspiration guide you!



Serve up  
Otherworldly dishes  
with your magic.



Use your magic to make the  
table and cauldron come alive!

## The Magical Cauldron: The Culinary Academy's Final Exam

### Play Style

SCRAP!  
Latest edition of their popular Projection Mapping Game!

Time Limit	Total Time Needed	Team Size	Price
60min	Approximately 120min	Max 6 players (per team)	From 3,500yen (1 person)



Escape in 10 minutes!

## ESCAPE FROM THE PRISON

### Play Style

Enjoy a puzzle-packed experience in just 10 minutes!  
Search the prison cell in pairs, and find the key to escape!

Time limit	Total Time Needed	Team size	Price
10min	Approximately 20min	Max 2 players (per cell)	From 1,000yen (1 person)



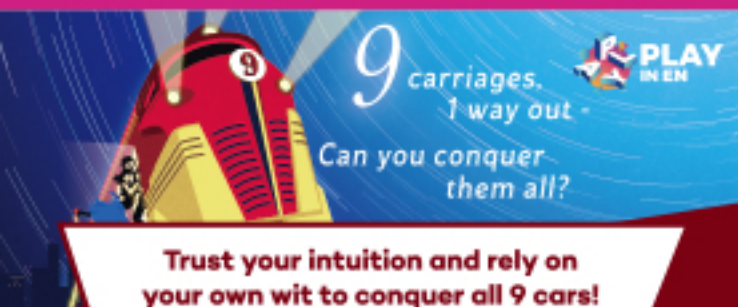
Walk around and solve puzzles!

## AN INVITATION FROM the Mystery Man

### Play Style

Solve the puzzles in the envelope and obtain the key to open the  
MYSTERY MAIL BOX! Mysterious red boxes lined up on the wall.

Time Limit	Total Time Needed	Team Size	Price
No Time Limit	Approximately 30~60 min	1+	1,200yen (1 person)



9 carriages.  
1 way out.  
Can you conquer  
them all?

Trust your intuition and rely on  
your own wit to conquer all 9 cars!

## Escape from THE NINE ROOMS The RUNAWAY TRAIN

### Play Style

Use all 5 of your senses and creative thinking skills to bust out  
of 9 consecutive unique rooms with an overlaying storyline.

Time Limit	Total Time Needed	Team Size	Price
50min	Approximately 60~120 min	Max 4 players (per team)	From 3,000yen (1 person)



Get the spell to find a missing cake!!

## A Mystery at Magic Academy

SHINJUKU

### Play Style

Explore the area, obtain the legendary spell, and save your friends!

Time Limit	Total Time Needed	Team Size	Price
No Time Limit	Approximately 60~90 min	1+	1,200yen (1 person)

## Important Points for Tokyo Mystery Circus

- If you have symptoms such as fever, cough, etc., please refrain from attending the games.
- Please leave large sized bags at the Cloak. (500 JPY per bag\*)  
\*We will provide you with a bag to put your belongings in.
- Only Japanese yen is accepted as cash. Credit cards are accepted at the ticket counter and Goods Shop.
- Spoilers are strictly prohibited.
- Outside food and drinks are not allowed in the building.