



OSAKA
KYOTO
K O B E
GUIDE

FREE
English

OSAKA UMEDA

One of the largest urban areas in western Japan, where you can enjoy everything, including sightseeing, dining, shopping, and lodging

The red HEP FIVE Ferris Wheel is a landmark of Umeda.

"HEP FIVE Ferris Wheel"

The building has a Ferris wheel with a height of about 106 meters. Enjoy the townscape of Umeda in a 15-minute tour.



Epicerter of fashion trends

HEP FIVE



▲ A red whale sculpture installed in the entrance atrium welcomes visitors.



TAMLO

A food floor with a total of 14 stores offering trendy sweets and gourmet foods was created on the 7th floor. The public space is also well-reputed, where customers can eat the food items they have purchased from restaurants and cafes.



Known as one of the Top 20 Buildings Around the World

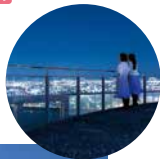
UMEDA SKY BUILDING



► KUCHU TEIEN OBSERVATORY

Enjoy a panoramic view of Osaka while feeling the wind on the rooftop about 173 meters above the ground.

* There is an admission fee for the observatory.



One of the largest commercial complexes in Japan

GRAND FRONT OSAKA SHOPS&RESTAURANTS

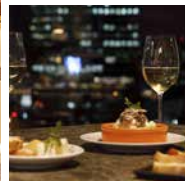


▼ Approximately 300 stores of various genres are located in the North and South Wings.



GRAND FRONT OSAKA SHOPS & RESTAURANTS

▼ UMEKITA FLOOR on the 6th floor of the North Wing is a modern dining space where you can enjoy the finest cuisine.



Department store with an established reputation for food



Hanshin Department Store Umeda Main Store



◀ The lineup of food products is overwhelming! Be sure to try the famous "IKAYAKI" squid pancake at the SNACK PARK, a stand-up food court offering fast, cheap and delicious foods.



A conveniently located shopping and dining zone, directly connected to Hankyu Osaka-umeda Station



HANKYU SANBAN GAI



▲ There are a variety of shops, including fashion, hobbies and restaurants. There is also the shared space "UMEDA FOOD HALL", where you can taste dishes from popular restaurants.



© 2024 SANRIO CO.,LTD.

A splendid and gorgeous shopping place that will excite you



Hankyu Department Store Umeda Main Store



◀ It is home to a wide variety of stores, including international luxury brands and cutting-edge fashion brands, one of Japan's largest cosmetics floors, as well as sweets and gourmet foods from all over the country. Weekly events are held in the "SHUKUSAI Plaza," a large open atrium on the 9th floor.



Commercial facility housing luxury brand stores and specialty stores



HERBIS PLAZA/PLAZA ENT



▲ Houses stores, restaurants and a theater. It is also directly connected to the 5-star hotel, The Ritz-Carlton, Osaka.

Luxury hotel offering the highest level of hospitality

Hotel Hankyu International



▲ Enjoy a luxurious stay in a classy hotel. Rooms are located on the 26th floor and above, with night views out the window.

Conveniently located in the middle of Umeda

Hotel Hankyu RESPIRE OSAKA



▲ Offering a healing moment without the hustle and bustle of the city. The lobby is directly connected to the restaurant floor of the LINKS UMEDA commercial facility downstairs.

◀ A connecting room, where the two rooms can be freely accessed through an interior door, can accommodate up to five people.

► "Yodobashi Camera Multimedia Umeda Store" is conveniently located on the lower floors.

One of Japan's largest appliance stores

Yodobashi Camera Multimedia Umeda Store



In the same building

▲ It boasts one of the largest sales floor areas of any appliance store in Japan.



OSAKA NAMBA

Here's where to enjoy affordable and tasty Japanese food!



All restaurants are excellent!
A dining hotspot

Dotonbori



◀ The streets are lined with restaurants serving tasty food at reasonable prices. The whole area has a vibrant atmosphere, with large, eye-catching signboards and newly opened restaurants. Many people take photos in front of the signboards.

▶ Try Osaka's specialty foods, such as takoyaki and okonomiyaki!



Boat trip along the Dotonbori River

Tombori River Cruise

▶ Enjoy a 20-minute cruise on an open boat with a guide as part of the crew.



OSAKA MINOH/IKEDA

Suburban area within an hour's train ride from Osaka-Umeda

One of Japan's 100 best waterfalls with a height of 33 meters

Minoh Waterfall

▶ The falls are beautifully colored each season in the rich natural environment. Wild Japanese monkeys can be seen from time to time.



Hands-on program at the birthplace of instant noodles

CUPNOODLES MUSEUM OSAKA IKEDA

▶ The program where you make your own original "cup noodles" is popular (fee required).



Make a wish on Daruma dolls at a historic old temple!



Katsuo-ji Temple

◀ "Kachi Daruma (winning Daruma) dolls" and "Daruma Mikuji" with a fortune in a ceramic daruma are famous throughout Japan. Daruma dolls can be seen throughout the precincts of the temple.

KYOTO ARASHIYAMA

You are sure to be impressed by the Japanese scenic beauty!



Fantastic spot with beautiful green bamboo

Sagano Bamboo Grove



◀ A path of about 400 meters, lined on both sides by a lush bamboo forest that almost covers the sky. It is not as crowded early in the morning.

Pray for marriage, childbirth and academic achievement

Nonomiya Shrine



▶ The shrine, located near Sagano Bamboo Grove, is especially famous for supposedly imparting good fortune for marriage.



Arashiyama tour on a rickshaw

EBISUYA



▶ A rickshaw driver will guide you around tourist spots. A photo service is also available.



The symbol of Arashiyama

Togetsu-kyo Bridge



▶ This is one of the most famous scenic spots in Kyoto. The scenery, colored by cherry blossoms in spring and yellow and red leaves in autumn, is especially recommended.



Ancient World Heritage temple known for its garden

Tenryu-ji Temple



▶ The garden, retaining the atmosphere of the time when it was created about 700 years ago, is a must-see.
▶ Visitors can enjoy its beauty in each of the four seasons.



KYOTO

KAWARAMACHI

KARASUMA

The center of temple/shrine tours and Japanese culture



Japan's must-visit temple that everyone knows

Kiyomizu-dera Temple



▲ A world-famous temple founded about 1,200 years ago. The famous stage overlooks Kyoto's cityscape.



The three-story pagoda, one of the largest in Japan, is the symbol of the temple.



The three streams of fresh water (= kiyomizu) flowing out of the Otowa Waterfall are the origin of the temple's name.



Very popular as a photo spot!

Make a wish with a colorful talisman

Yasaka Koshindo Temple (Kongo-ji Temple)



▲ It is believed that if you persevere with one of your desires and dedicate a talisman, your wish will come true.

The magnificent Sanmon Gate welcomes you

Nanzen-ji Temple



◀ You can see the entire temple grounds by climbing the Sanmon Gate, one of the three greatest gates in Japan.

▼ A brick waterway running through the precincts gives it a retro feel. Also known for beautiful autumn leaves.



Elegant shrine with vermilion-lacquered buildings

Heian Jingu Shrine



▲ The large vermilion torii gate is the landmark. A road passes under the gate.

◀ When you pass through the gate, a wide view of the shrine grounds stretches out in front of you. The building in the center is Daigokuden, a National Important Cultural Property.



Tuck into the finest Uji matcha sweets

Saryo Tsujiri Gion Main Store



▶ The parfait full of jelly, ice cream, and sponge cake made with high-quality green tea is a must-try. A store selling tea leaves and matcha sweets is attached to the café.



Amazing matcha flavor!



◀ The oldest Zen temple in Kyoto. The temple has three gardens of different styles, including the "Chouontei" garden with a magnificent stone arrangement.

▼ In addition to the magnificent ceiling painting "Twin Dragons" in the Dharma Hall (not available on June 5 every year), the sliding door paintings are also worth seeing.

Houses a variety of Japanese gardens and painting art

Kenninji Temple



▼ Don't miss the replica of the National Treasure, Wind God and Thunder God Screens.



The foodstuffs of Kyoto attract chefs and housewives alike

Kyoto Nishiki Food Market



▼▶ A 390-meter-long street lined with stores offering seasonal ingredients and takeout food!



Experience making seasonal Japanese sweets!

Kameya Yoshinaga



◀◀ Make your own wagashi (traditional Japanese confectionery) at a long-established Kyo-wagashi shop while receiving instruction from an artisan (reservation required). You can enjoy the freshly made wagashi with green tea.



KOBE

KOBE

A historic port city with both a sea and mountains in its vicinity

Many old Western-style residences with an exotic atmosphere are open to the public



Kobe Kitano Ijinkan



The Kitano area in uptown Kobe is dotted with the old residences of traders, nobles, and other people who came to Japan from abroad over 100 years ago. About 15 residences in rare architectural styles are open to visitors.



Seaside area as an icon of the port city of Kobe

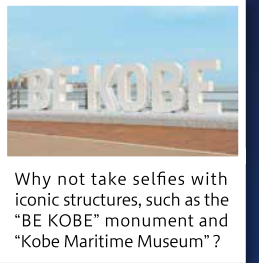
Meriken Park



The Kobe Port Tower is scheduled to reopen in April 2014 after renovation.



©KOBE TOURISM BUREAU



Why not take selfies with iconic structures, such as the "BE KOBE" monument and "Kobe Maritime Museum"?

Enjoy unique gourmet food near the station



EKIZO KOBE SANNOMIYA



Directly connected to Hankyu Kobe-sannomiya Station!

▲EKIZO KOBE SANNOMIYA houses a total of 38 restaurants, bars, cafes, and stores, including Japanese, Chinese, Thai, and various other restaurants. There is also a supermarket, providing visitors with added convenience.

Savor Kobe beef, known as one of the three top Wagyu brands in Japan

Kobe Steak Roasted Beef Studio WAKKOQU



▲Kobe beef stands out in terms of flavor among various brands of Wagyu beef, which is globally renowned for its deliciousness. Kobe beef steak lightly grilled with great care features a melt-in-your-mouth texture and an excellent, genuine flavor of meat.

The high-rise hotel, overlooking the sea and mountains, will bring you quality sleep

remm plus Kobe Sannomiya



▶The breathtaking night view of Kobe and the spacious bed will remove your fatigue of the day.



Fusion of living creatures and art! Urban aquarium with a new sensation

átoa

▲A fusion of aquarium, digital art and stage design. You can encounter a wide variety of creatures in a fantastic space.



The café has a menu featuring otter motifs!



See animals moving around energetically!



Kobe Animal Kingdom



▲At Kobe Animal Kingdom, animals live in their near-natural conditions, instead of being confined within a cage or fence. The garden is also home to many flowering and other plants. Events and shows are held not only outdoors but also indoors, so you can enjoy indoor events without feeling concerned about the weather.

A stretch of herb gardens on a hill, one of Japan's largest stretches of herb gardens

Kobe Nunobiki Herb Gardens & Ropeway



▲Take the ropeway to reach the top of a hill at an elevation of about 400 m with a breathtaking view. There are also 12 gardens featuring about 200 kinds of blooming flowers and herbs, as well as a herb cuisine restaurant.



KOBE ROKKO

There are many spots that offer you good experiences with natural features!

Enjoy a wonderful panoramic view from the top of Mt. Rokko

Rokko-Shidare Observatory



▼Glittering night views from the observatory, one of the best view spots in Japan, will give you an extremely deep impression! During the daytime, the observatory provides a panoramic view of the Osaka Plain and surrounding areas.

Visit Mt. Rokko by Rokko Cable Car!



Held annually at Mt. Rokko!
Contemporary Art Festival

KOBE ROKKO MEETS ART



*An exhibit displayed at the 2023 Festival

About the event

Rokko Meets Art is a contemporary art festival that has been held annually since 2010. A total of more than 520 artists from Japan and abroad have participated to date (as of 2023). Visitors can experience the world of art in harmony with the abundant nature while hiking around the venue on Mt. Rokko.



▲Scan here for details.

Major venues

- | | |
|--|--|
| 1 Rokko Forest Sound Museum (→P9) | 5 Trail area |
| 2 Rokko Alpine Botanical Garden (→P9) | 6 Chapel of the Wind area |
| 3 Rokko Garden Terrace area | 7 Rokko Arima Ropeway, Rokko Sancho Station |
| 4 Rokko Cable Car (Rokko Cable Shita Station, Sanjo Station, Observation Deck) | 8 Hyogo Prefectural Mr. Rokko Visitor Center |
| | 9 Mt. Rokko Silence Resort |

One of the largest adventure parks in Japan

Rokkosan Athletic Park GREENIA



▲Fully enjoy playing with 164 items of adventure playground equipment on the ground or water, or in the air, in a total of seven areas.

A comfortable time surrounded by nature and music

ROKKO Forest Sound Museum



◀Visitors can enjoy displays of music boxes and other automatic musical instruments and their performances. They can also enjoy sound-related exhibitions in the garden. There is also a plan that allows visitors to spend time in a transparent dome (reservation required).



Artificial snow ski resort that opens only in winter

Rokko Snow Park

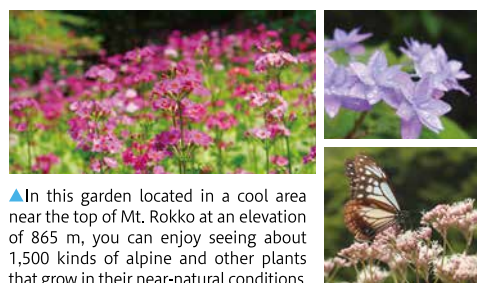


▶“Rokkosan Athletic Park GREENIA” becomes a ski ground with gentle slopes in winter. All levels of skiers, from beginners to intermediate and advanced, can enjoy skiing and snowboarding. There is also a snow play area.



Alpine plants from around the world create beautiful seasonal scenery

Rokko Alpine Botanical Garden



▲In this garden located in a cool area near the top of Mt. Rokko at an elevation of 865 m, you can enjoy seeing about 1,500 kinds of alpine and other plants that grow in their near-natural conditions.

Some works can be viewed year-round!

Some of the artworks will be exhibited in the outdoor artwork area of the Rokko Forest Sound Museum, which is also the base of the Art Festival, until the end of the Art Festival period in 2025. You can encounter art at any time!



Princess Dorian standing on the Stone Stage

Nobuo MITSUNASHI

Human and spherical objects made of ceramic clay stand on a stone stage made of paving stones used by the Hanshin Electric Railway.

Exploring with the Yellow Binoculars

WA!moto, “Motoka Watanabe”

Vivid yellow binoculars standing in nature! This is an experiential artwork. You can look into the binoculars to look for bird boxes in the forest.



Peeking into the Forest, the Mountain Hole

Misa FUNAI

This work was painted on a hollowed-out mirror. The reflection in the mirror as you try to look at the scenery behind the mirror is also part of the art.

Attractions available only during the event period

Artworks that can be enjoyed all the more at night

There are some artworks making use of light and images, which can be enjoyed all the more during the night time. During the event period, the trees at the venue are lit up, allowing visitors to enjoy a fantastic art space that is different from the daytime. The autumn colors, which are at their best from mid-October to mid-November, are also spectacular.



*An exhibit displayed at the 2023 Festival

Tadao ANDO's architecture “Chapel of the Wind” is open to the public!

The Chapel of the Wind, designed by world-renowned architect Tadao ANDO and usually closed to the public, will be open to the public as an exhibition venue only during the event period. The collaboration of art and the simple and sacred space, which reflects the characteristics of Ando's architecture, is well worth seeing.



Services for Muslim travelers are also available!

Rokko Snow Park (→P9) has two prayer rooms for Muslims, one for men and one for women. Hours of use are 9:00 – 21:00, and the rooms are open to non-users of the Park. There is also a restaurant that serves halal foods that are pork-free and alcohol-free.



KOBE

NADA ARIMA TAKARAZUKA KOSHIEIN

A place to visit,
extending your journey
from Kobe

A major sake production center,
dotted with famous breweries



Five areas across Kobe City and Nishinomiya City, blessed with a favorable climate for sake brewing, are home to 26 breweries, and you can buy distinctive varieties of sake there.

Some breweries hold sake tastings or have exhibition facilities.



Get immersed in the world of manga
by Osamu Tezuka

Osamu Tezuka Manga Museum



The museum exhibits items related to the representative Japanese manga artist Osamu Tezuka (1928-1989) and valuable materials concerning his works. The museum building itself reproduces the world of manga by Tezuka. Limited goods are also sold at the museum.



You will surely feel it is
like heaven bathing in one of the
best hot springs in Japan



Coupons that include an admission
ticket and train tickets are available!
Scan here for details.



Arima Onsen Taiko-no-yu

Arima Onsen Taiko-no-yu is a hot-spring theme park where you can try 26 kinds of baths, including those named "Kinsen" ("Golden Spring") and "Ginsen" ("Silver Spring"), as well as a bedrock bath. The reddish brown water of Kinsen has an even higher salt content than seawater. Also enjoy observing furniture that is a reproduction of furniture of an architectural style dating back about 440 years.



After enjoying the hot spring
baths, you can enjoy delicious
Japanese cuisine at the food court.

Be fascinated by musicals performed by an all-female
theater company

Takarazuka Grand Theater



The theater presents unparalleled,
gorgeous dramas and shows.

Enjoy watching exciting baseball games at Japan's oldest
full-scale baseball stadium with an open atmosphere!



Hanshin Koshien Stadium and the Museum of Hanshin Koshien Stadium



At the Koshien History
Museum, located on the
south side of the stadium,
you can experience the
fascination of baseball and
the stadium.



The stadium is the home of the Hanshin Tigers and also serves as the venue of national high school baseball tournaments in spring and summer. It is loved by many fans of Japanese baseball.



京とから 雅路 Kyo-train GARAKU

The Kyo-Train Garaku, which runs on the Hankyu Kyoto Line,
is a modern Japanese-style train with each car featuring a different design.
You can feel the refined atmosphere of Kyoto from the moment you get on
the train, and your trip to Kyoto will be more exciting!

- Operating days: Days when the weekend/holiday timetable is applied
- No reservation required
- No additional charge (standard fare only)
- Operating between Osaka-umeda and Kyoto-kawaramachi

[Departure from Osaka-umeda, bound for Kyoto-kawaramachi]

Depart Osaka-umeda	9:32	11:32	13:32	15:32
Depart Juso	9:36	11:36	13:36	15:36
Depart Awaji	9:41	11:41	13:41	15:41
Arrive Katsura	10:07	12:07	14:07	16:07
Arrive Karasuma	10:13	12:13	14:13	16:13
Arrive Kyoto-kawaramachi	10:15	12:15	14:15	16:15

[Departure from Kyoto-kawaramachi, bound for Osaka-umeda]

Depart Kyoto-kawaramachi	10:41	12:41	14:41	16:41
Depart Karasuma	10:43	12:43	14:43	16:43
Depart Katsura	10:49	12:49	14:49	16:49
Arrive Awaji	11:15	13:15	15:15	17:15
Arrive Juso	11:22	13:22	15:22	17:22
Arrive Osaka-umeda	11:28	13:28	15:28	17:28



*Trains bound for Kyoto-kawaramachi and bound for Osaka-umeda operate on days when the weekend/holiday timetable is applied.

Relax in different types of seating

A variety of seats are on standby to match the car's interior design.
Whether you are in a group or on your own, you can spend a relaxing
moment in each of them.



Window- facing seats

Cars 3 and 4 have seats facing the
windows, which are perfect to
see the scenery of Kyoto and
Nishiyama from the train windows.

Box seats

Cars 1 and 6 feature comfortable
box seats with tatami mats affixed to
backrests and seating areas.



Single seats

Many single seats with a
luxurious and special feel are
arranged, allowing passengers
to enjoy a quiet journey.

A variety of designs featuring Kyoto

Elements of a traditional Kyoto townhouse, such as tsuboniwa (spot garden),
are everywhere inside the car.
Enjoy the interior and exterior designs of cars that showcase the four seasons.

Karesansui garden (dry landscape garden)

Car 2 has a karesansui-style
tsuboniwa (spot garden)!
The lighting of the garden
is dark, and spotlights give
a sense of elegance.



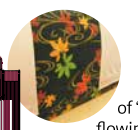
Sudare(bamboo screens)

Sudare (bamboo screens) are
used as sunshades, and
"snow-viewing windows,"
which are glass below and
translucent shoji paper on top,
are installed, creating an
atmosphere similar to that of a
traditional Kyoto townhouse.



Seasonal designs

Each car has a seasonal and botanical
theme. The design is unified by a calm
and relaxed atmosphere, mainly based
on flowers, birds and traditional patterns.
Pay attention also to a large fan painted
on the vehicle body.



The seat
features
a design
of "maple in
flowing water,"
a typical pattern
of autumn leaves.





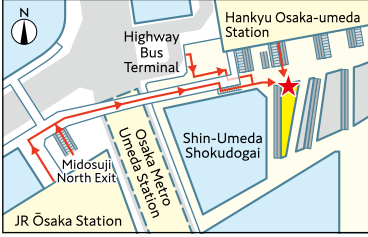
Tourist Centers



Osaka-umeda

Osaka-umeda Station

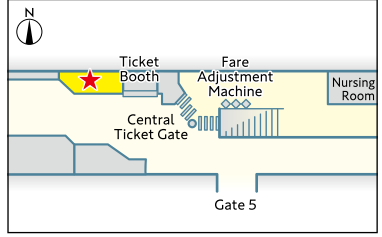
Hankyu Tourist Center, OSAKA-UMEDA



Kyoto

Kyoto-kawaramachi Station

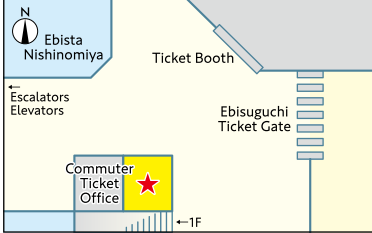
HANKYU Tourist Information Center, KYOTO-KAWARAMACHI



Nishinomiya

Nishinomiya Station

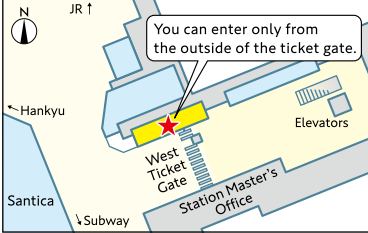
Hanshin Nishinomiya Tourist Center



Kobe

Kobe-Sannomiya Station

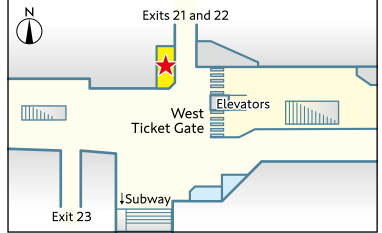
Hanshin Electric Railway Service Center



Kyoto

Karasuma Station

HANKYU Tourist Information Center, KYOTO-KARASUMA




Foreign currency exchange ATM



Find automated currency exchange machines at Hankyu Hanshin Group facilities and other locations where you can change foreign currency into Japanese yen!

< Available currencies >

- US Dollar
- Euro
- Chinese Yuan
- Korean Won
- British Pound
- Canadian Dollar
- Singapore Dollar
- Australian Dollar
- Hong Kong Dollar
- Taiwan Dollar
- Thai Baht
- Malaysia Ringgit
- Philippine Peso
- Indonesian Rupiah




Website



Enjoy! OSAKA KYOTO KOBE

Our website is full of Osaka, Kyoto, and Kobe trip information, posting lots of feature articles by region and by season, and recommended routes for sightseeing! Conveniently, you can also check sightseeing spot information by area!



Enjoy!
OSAKA
KYOTO
KOBE




Instagram



< Hankyu Hanshin Holdings, Inc. Official >
@virtualtrip_japan

Our Instagram is offering information of attractive features of Osaka, Kyoto, and Kobe! Please tag "#virtualtrip_jp"!

Follow me! /



* The information in this pamphlet is current as of March 2024.
Information is subject to change without notice. Be sure to check the official website before you start off on your journey.