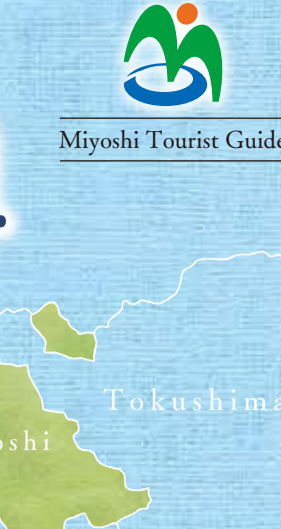


Hidden Japan

Iya Valley

Oboke Gorge



Experience this otherworldly place, teeming with natural wonders, home to legends and adventure, and where old world charm awaits.



Self-Guided Walking Tours

One of the best ways to experience the area would be to get out of your vehicle and see some sights on foot. All the places below are great spots for exploring on your own. Detailed maps and area information are available at each location, found at places with the * symbol. Approximate total length to explore each place is given.



Climb Mt. Tsurugi for a Panoramic View
Starting at Mikookashi, take either the chair half-way up, or choose to climb the whole route. If you walk, the first section will be under a canopy of maple trees which is lovely in the autumn. Either way, be sure to stop by the Oboke Shrine where you can taste the mountain's renowned spring water. When you finally crest the broad summit you can enjoy the breathtaking view from various spots, or even choose to hike further to one of the neighboring peaks. Large lunch* on top after meals and lodging (4-5 hours)



Stroll Along Ikeda's Historic Streets
From JR Awa-Ikeda Station*, head down through the old covered arcade and then cross the main road to enter the old town. The streets here feature a mix of newer buildings and traditional Udausu architecture. Be sure to stop at the Ikeda Tobacco Museum* which is set in a lovely old house, and have a break, while the small courtyard garden here. Side-streets branch out here and there, and it's worth exploring, while the heading north from the small roof-top shrine leads to the peaceful Sawa Park (1-2 hours)



Seek Out Eerie Yokai Monster Statues
Start at the Yokai Museum* in the Riverside Station Chōse* (p. 200 meters down Rt 32 and turn left onto Rt 272 where the first statue appears on the corner here. Follow Rt 272 through the narrow side valley and try to spot all the statues along here (about ten total). Turning at the last lot to go over the bridge will lead you to a couple more. Back on Route 272, you'll eventually reach Fupunato Park (about 2km from start) for the last statue. A longer version with more statues is also possible (1.5-2 hours)



Experience Nature at Kurozo Marshland
Walk out from the parking area* and follow the loop path to the right out into the main marsh. Depending on the season you will see different flowers in bloom. Various birds make their home here, as well as a large range of butterflies. The sound of crickets filling the air, and in the summer the cicadas are also buzzing. Different side paths lead off for further exploration while others cross-cross the marsh. On the far end, a trail leads down to the Togoyoshi-ya cottages peek out here there. Every season offers its own unique scenery (1.5-4 hours)



Staring the Old Iya Highway by Foot
Starting in central Nishiyama, follow the valley's original road Rt 32 northward into Iyake to enjoy the gorge's magnificent view points, including the impressive "Hi-no-Ji" Bend. Later, take a break at the Iya Onsen* to ride the cable car down for a riverside bath, and then continue on to the dizzying Peeng Boy Statue overtop. Follow the curvy hillside road further down through thick forest and past other gorge viewpoints to Iya bus stop. (4-5 hours) (Buses traverse this route as well as you wish to shorten the trip)



Explore Ochiai Mountaineer Village
From the bottom, follow the old stone footpaths up into the village, passing by the small terraced farm plots as you see the residents go about their daily life. Visit the historic Nagakoba house* to walk through a traditional Iya residence, and then climb further to Sasano Shrine and take a break under its cool old-growth cedar trees. Continue up the various paths more, where the view gets better with every step as the fractured rocks of the Oboke-Iya cottages peek out here there. Every season offers its own unique scenery (1.5-4 hours)

Workshops

Connect with local people through hands-on learning experiences!

- Traditional Soba Making**
Learn how to make the famous Iya Soba. With this class you can experience the whole process including grinding the buckwheat by stone millstone, kneading out the dough by hand, and cutting the noodles. Then, feast on what you made. No experience needed to enjoy!
Contact: Tsukaki Atsushi
☎0883-88-6025 Fax ☎083-88-5415
Prior reservation of at least 3 days needed
* ☎357 077 5994-14
- Henro Soba Making**
Historically, Iya Soba has been given to Henro (pilgrim) travelers, and in this class you can experience the process of soba making, including mixing and kneading the dough, rolling it out, and cutting up noodles. After eating what you've made, you'll be given a certificate of completion.
Contact: Sunflower Boud
☎0883-86-8111
Prior reservation of at least 2 days needed
* ☎357 271 010-20
- Konyaku Making**
By using indigenous Japanese yams, learn the process of making Konyaku (yam cake). The locally grown yams are special with a long tradition of use. In this workshop, you'll see the process passed down through generations, you can make this traditional countryside delicacy in a lively natural setting.
Contact: Kinako Village ☎0883-86-1111
Prior reservation of at least 3 days needed
* ☎357 450 522-00

Miyoshi Quality

Taste the bounty of offerings from the unspoiled mountains and rivers, as the time-honored local cuisine includes wild game and macrobiotic delicacies. Throughout Japan, this region is known for its hearty, natural flavors.

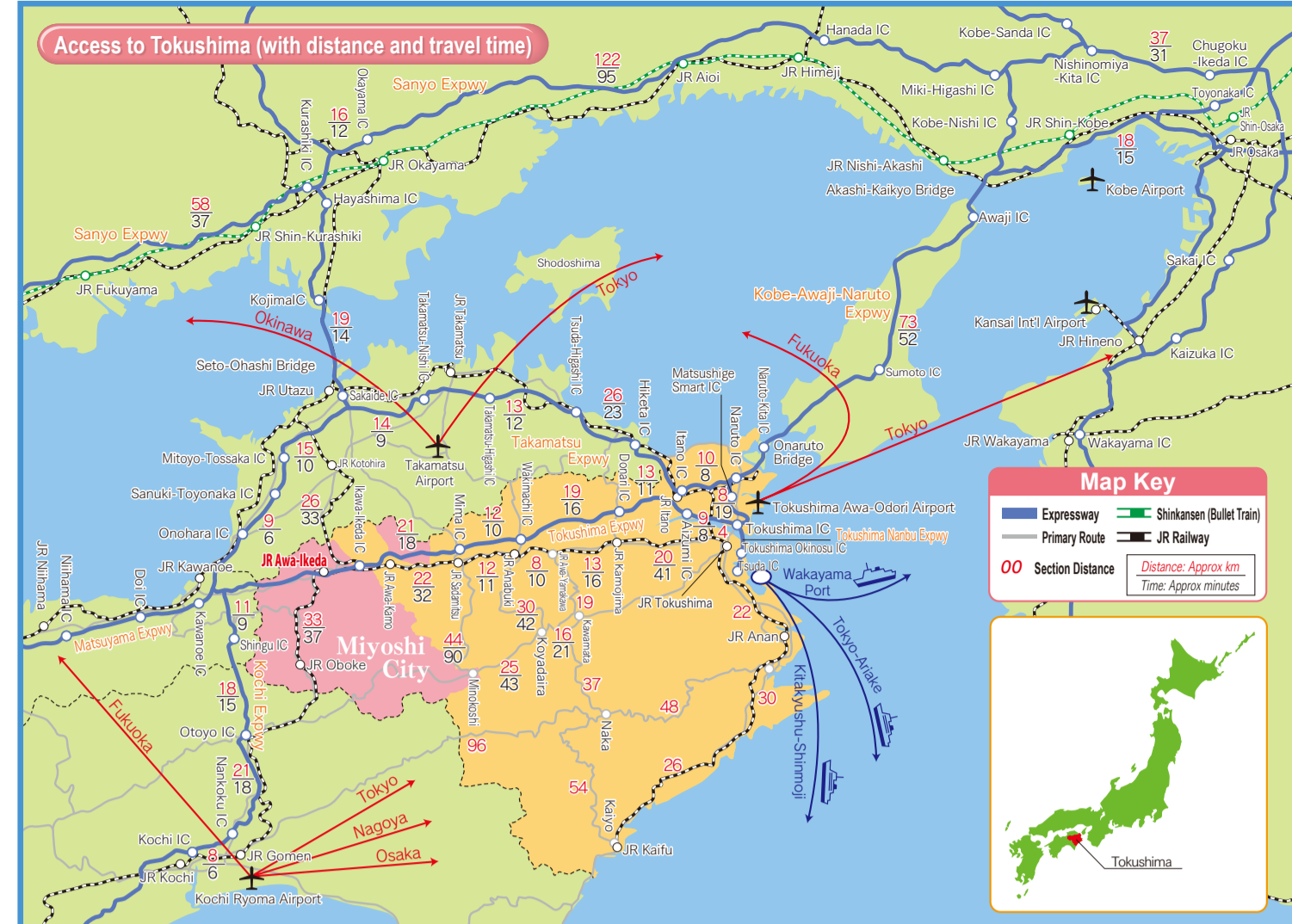
- Iya Soba**
Set in the Iya Valley in an area renowned for growing buckwheat, the short, thick, hand-made soba noodles that are served with a variety of toppings are a true delight. Fuel the warmth of this delicate, traditional taste.
- Hirara Yaki**
Cooked on a large flat stone or griddle, a wall of meat encloses a robust stew of river trout, tofu, and vegetables. This unique, hearty stew is indigenous to Iya, and is able to be reserved at some accommodations.
- Omiki-nabe**
The base for this local hot-pot is a mix of sake, miso, and soy sauce, and served with Tokushima area pork and various vegetables. Available at the Shikoku Sake Festival (mid-February) or at other hotels/restaurants.
- Heike Gozen**
This traditional bozle set meal of local farm products features recipes that date back to the ancient days of the Heike, with the offerings based on what the season has to offer.
- Deko Mawashi**
This uniquely Iya offering consisting of a thick slice of konyaku yam cake, a hefty cube of "stone" tofu, and a dense local potato, all skewered together, sits here, and is slow roasted around a fire.
- Wild Game Meat**
Also referred to as gibier in Japanese (taken from the French term for wild game), in Miyoshi City, this is a traditional fare, as the deep mountains have been superb hunting grounds since long ago. Wild boar and deer are the main offerings, served in a variety of styles throughout the area.
- Grilled Ayu and Amego**
The local ayu sweetfish and amago river trout are taken from the clear mountain streams, and after being marinated with salt, they are slowly grilled on skewers around a charcoal fire.
- Yokai Sweets Kappa-na**
Satisfy your sweet tooth with some Kappa-na, a traditional Iya sweet made of green peas and charcoal, and stuffed with fresh tasu beans.
- Yuzu Citrus Syrup**
This syrup is a natural product made from 100% organic yuzu citrus.
- Oboko Japanese Black Tea**
This tea is grown using traditional, steep slope agricultural methods. It has a smooth, refreshing flavor.
- Local Sake**
Miyoshi sake uses the area's natural ingredients, creating an exquisite taste revered by aficionados.
- Specialty Goods**
Miyoshi Specialty Shop offers a variety of local products including the area's authentic flavors. Great for yourself or as a gift.

The Yokai Menu

Special dishes based on local monster legends!



Hidaru Ramen
Named after the legendary Hidaragami monster, you'll be treated to a bowl of ramen featuring thick, hand-rolled ramen noodles. The soup is decked with slices of boar meat and wild mountain sprouts.



Miyoshi City Access Guide

Necessary Travel Time	
●JR Train	
From JR Tokyo	JR Okayama JR Awa-Ikeda About 5 hrs
From JR Shin-Osaka	JR Okayama JR Awa-Ikeda About 2 hrs 30 min
From JR Okayama	JR Awa-Ikeda About 1 hr 30 min
From JR Tokushima	JR Awa-Ikeda About 1 hr 10 min
From JR Takamatsu	JR Okobe About 1 hr
From JR Kochi	JR Okobe About 1 hr
From JR Matsuyama	JR Tadotsu JR Awa-Ikeda About 3 hrs
From JR Awa-Ikeda	JR Okobe About 30 min
●Car	
From Kobe	Tokushima Awa-Ikeda About 2 hr 30 min
From Okayama	Zentsuji Awa-Ikeda About 1 hr 40 min
●From Airport (by car)	
From Kochi Ryoma Airport	About 1 hr 20 min
From Takamatsu Airport	About 1 hr 20 min
From Tokushima Awa-Odoi Airport	About 1 hr 20 min
* From Awa-Ikeda to Okobe is about 30 minutes by car.	
●Highway Bus	
From Osaka	Awa-Ikeda Bus Terminal About 3 hrs 50 min
From Kobe	Awa-Ikeda Bus Terminal About 3 hrs

Event Guide

*Event location and dates are subject to change. Please check beforehand for most information.

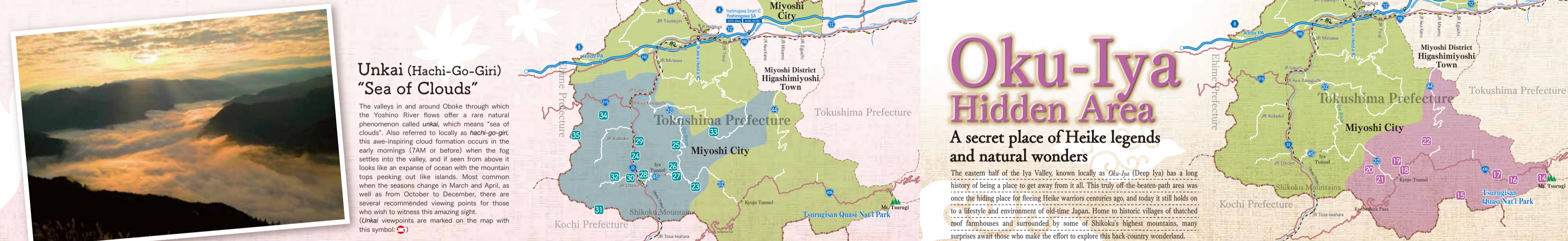
- Oboke-Iya Area**
Shizuka Highland Field Burn
See the highlights for in bright sun!
See the highlights for in bright sun!
This is a free event. It is held in a field, so please be prepared for rain. The event is held in a field, so please be prepared for rain. The event is held in a field, so please be prepared for rain.
- Northern Area**
Iyaka Awa-Odoi Festival
For 1 day during the Obon Holiday, Iyaka explodes with energy! About 30 teams of traditional dancers battle the streets of Iyaka, on the town square in Mt. The event is held in a field, so please be prepared for rain.
- Oboke-Iya Area**
Yokai Festival
Celebration in the hometown of Konyaku! The fun festival in honor of mythical Yokai, a local festival, and a variety of traditional Iyaka, a "Yaka" parade, and even a Yaka band!
- Northern Area**
Yokai Parade
A tribute to the location of Konyaku! A parade featuring a large float, a parade float, and a parade float.
- Oboke-Iya Area**
Iyaka Festival
Iyaka Festival is a festival that celebrates the location of Konyaku. It is held in a field, so please be prepared for rain.
- Northern Area**
Shikoku Sake Festival
Shikoku Sake Festival is a festival that celebrates the location of Konyaku. It is held in a field, so please be prepared for rain.
- Oboke-Iya Area**
Yukigassen Shikoku Tournament
Yukigassen Shikoku Tournament is a festival that celebrates the location of Konyaku. It is held in a field, so please be prepared for rain.

Miyoshi City Tourist Information
☎0883-76-0877
Miyoshi City Office Tourism Strategy Division
21-851 Machi, Ikeda-cho, Miyoshi City, Tokushima, Japan 778-0002
TEL 0883-76-7620 FAX 0883-76-0003

MIYOSHI FINDER

Oboke-Iya Active Area

This scenic region is recommended by the Michelin Green Guide. World-class attractions and activities abound in the Oboke-Iya area, which is filled with dramatic valleys and majestic views. The breathtaking road through Iyake with the emerald waters of the Iya River flowing below is praised by travel specialists, including the Michelin Green Guide. Crossing the famed Iya-no-Kazurabashi Vine Bridge brings a thrill to anyone, while those looking for more adventure can go rafting down the torrents of the Yoshino River as it blazes through the stunning Oboke Gorge.



Northern Area Culture Area

Feel enriched through history and culture. Long known as the cradle of Shikoku, the northern area of Miyoshi City offers a collection of historical sights, local heritage, and natural beauty. Located by the Yoshino River, here you can visit ancient monuments, temples that offer a contemplative appreciation, or stroll along quiet streets lined with traditional architecture that heralds days of yore. Nature lovers will also welcome the variety of waterfalls, verdant parks, and scenic landscapes in this encompassing area.

- 23 Iya-no-Kazurabashi (Vine Bridge)**
One of Japan's Three Strange Bridges, the astounding Kazurabashi suspension bridge is made of local vines and is a national historic designated Important Cultural Property. Legend says that the ancient Heike residents made both bridges in order to easily cut them away if pursued by invading warriors. rebuilt every 3 years and extending 4km long, 2m wide and saving 1km above the river below, walking across the creating views of this back-country marvel will surely make your heart pound.
Contact: Miyoshi City Tourist Information ☎0883-76-0877
For navigation, use this number: ☎0883-87-2200
Location: 162-2 Zentsuji, Miyoshi, Miyoshi City
Entry fee: Adults 550 yen, Children 350 yen
Opening time: All year
- 24 Oboke Gorge • Koboke Gorge**
The steep canyons formed by the rushing Yoshino River are known as the Oboke and Koboke Gorge, the names of which interestingly translate as "big step danger" and "little step danger" probably due to the historic risks involved when traveling through these formidable wonders. Believed to have formed 100 to 200 million years ago, the 5km long walls of sculptured rock in this impressive National Natural Monument beautifully change in appearance with the seasons, and can now be safely viewed by road from above or by boat from below.
Contact: Miyoshi City Tourist Information ☎0883-76-0877
Location: Oboke Gorge, Miyoshi, Miyoshi City
Entry fee: Adults 500 yen, Children 300 yen
Opening time: All year
- 25 Iyakei / Peeing Boy Statue**
The spectacular lower reaches of the Iya Valley are known as Iyake (gorge area), where for about 20km the river is a narrow, deep, and clear. One can follow the mostly one-lane old Iya Highway (No. 32) which winds through the high along the mountainside through dense, lush, and verdant forests. The Iyakei is a beautiful sight, with its waterfalls, and its surrounding mountains. The Iyakei is a beautiful sight, with its waterfalls, and its surrounding mountains.
- 26 Iya Fureai Park**
Enjoy the abundance of nature at this park along the banks of the Iya River. Offering a fun moon-like ride that wanders 420m along the mountainside gardens here, there is also zip-line across the Iya valley and a tranquil campground. It's also a popular spot to try fishing.
Contact: Miyoshi City Tourist Information ☎0883-76-0877
Location: 379 Onouchi, Nishiyama, Miyoshi City
Operating time: March to November
- 27 Roadside Station Nishi-Iya**
This rest area in central Nishiyama is part of Japan's Michi-no-Eki system and is near to the Iyake-Kazurabashi. Lots of handmade Iya souvenirs and treats are available here, including Iya Soba and local honey.
- 28 The Heike Residence Museum**
Traditional materials are displayed in this traditional building, which is a remnant of the Iyake. The museum exhibits materials and relics of Heike Clan.
- 29 Nature Tourism**
Born of the earth's subterranean movements, landscapes in Miyoshi City witness the change of time over millions of years. As the veins of rifting and waterbedded chambers, the nature here is widely renowned. In Yoshino River, rapid and slow water offer various kinds of water activities. Enjoy outdoor activities in this otherworldly place.
- 30 Roadside Station Oboke**
Located near the heart of the Oboke Gorge, this large rest area is part of the Michi-no-Eki system and offers array of souvenirs and treats, as well as a rock museum full of stunning geological treasures. This is also home to the unique Yokai Museum, which is great for anyone looking for a new experience.
- 31 Mt. Nokanoike**
Rising to a height of 1,294m, the misty perennial forest of this mountain is home to a variety of rare plant species, including the Iyakei. The Iyakei is a beautiful sight, with its waterfalls, and its surrounding mountains.
- 32 Statue of Konaki-jiji**
Konaki-jiji is a famous Yokai monster that was born in the Iyake. The statue is a beautiful sight, with its waterfalls, and its surrounding mountains.
- 33 Ryugatake**
The bold cliff-face of Ryugatake, with its surrounding forest, is a beautiful sight, with its waterfalls, and its surrounding mountains.
- 34 Handa Iwa Rocks**
The practice surroundings of these giant stones are well known for their beauty. Filled with colorful autumn leaves, they are a beautiful sight, with its waterfalls, and its surrounding mountains.
- 35 Shiozuka Highland**
This fantastic 100 hectare plateau is dominated by the tall walls of Shiozuka-mine. Spreading across both Tokushima and Ehime Prefectures, on clear days this lofty area offers views of as far as the Seto Sea and beyond to the north. At night the unobstructed sky explodes with stars, while the early morning provides a chance to see the wondrous aurora (Sea of Clouds). Each spring the area is buried off in a glowing display of swarming fire. Bungee jumps and camping are available along with other outdoor activities.
- 36 Chiiori Trust**
The organization that maintains this 300 year old thatched-roof house is led by its author and East Asia researcher Alan King. The house is a beautiful sight, with its waterfalls, and its surrounding mountains.
- 37 Ryugatake Cottage**
Set in the lovely Ryugatake Park, this secluded apartment building offers a beautiful sight, with its waterfalls, and its surrounding mountains.
- 38 Ochiai Village**
Nationally Important Preservation District for Groups of Traditional Buildings, Ochiai Village is a beautiful sight, with its waterfalls, and its surrounding mountains.

- 14 Mt. Tsurugi**
Noted as one of Japan's 100 Famous Mountains and standing at 1955m, Mt. Tsurugi is the highest peak in the region and home to lush woodlands. It is also referred to locally as Kenzan, legend has it that the sword of the Heike chief Emperor Antoku is buried somewhere within. Suitable for even novice hikers, climbing the mountain is not overly difficult, and one can take a chairlift halfway up, upon reaching the meadow-covered top the grand view extends to the Seto Sea northwards, while starry nights and early morning mist (sea of clouds) await those who opt to stay in one of the summit lodges.
Contact: Tsunagi-san Chairlift ☎0883-67-5277
Entry fee for chairlift (one-way): Adults 1,050 yen, Children 520 yen
Inquiry phone: ☎0883-86-1111
Opening time: Chairlift operation ends at sunset
- 15 Mt. Miune**
Also referred to locally as Samei Mt. Miune straddles Tokushima and Kochi Prefectures and is considered one of the most beautiful mountains of Shikoku. Trails up the side lead through tropical forests full of rare plant species, while near to its craggy 1,800m summit lies an idyllic pond. On top, the commanding view across the upper Iya Valley and beyond is both awe-inspiring and unforgettable.
- 16 Oku-Iya Niju Kazurabashi (Double Vine Bridges)**
Tucked away in a quiet gully at the deepest end of the Iya Valley lies two hidden treasures. The famous Oku-Iya Double Vine Bridges capture the imagination with their verdant forest settings, most macrobiotic charm. Considered "hell and husband bridge" due to one being "male" and the other "female", those who make the effort to walk out these secluded corners of twisted vine will certainly fall in love with them.
- 17 Kakashi-no-Sato (Scarecrow Village)**
In the valley's final village of Naguro-Seto, one of Japan's scariest hamlets. Though home to only a handful of people, this village is a beautiful sight, with its waterfalls, and its surrounding mountains.
- 18 Higashi-Iya History and Folklore Museum**
This collection of artifacts and historical documents is the largest of its kind in the Iya Valley. It is a beautiful sight, with its waterfalls, and its surrounding mountains.
- 19 Bukeyashiki Kita-ke (Samurai Residence)**
Built over 250 years ago, this impressive residence is a beautiful sight, with its waterfalls, and its surrounding mountains.
- 20 Ochiai Village**
Nationally Important Preservation District for Groups of Traditional Buildings, Ochiai Village is a beautiful sight, with its waterfalls, and its surrounding mountains.

- 1 Unpenji Temple**
As number 66 in Shikoku's 88 Temples Pilgrimage, Unpenji Temple is also the highest of the set with its mountainous peak of 810m. Founded in the year 795 by the esteemed monk Kobo Daishi, the peaceful temple was referred to as Shikoku Koya, and can be accessed by local road or by pilgrim trails that lead through Oku-Iya and beyond. The temple is a beautiful sight, with its waterfalls, and its surrounding mountains.
- 2 Hashikuraji Temple**
One of the main temples of the Pilgrimage, Hashikuraji Temple is also the highest of the set with its mountainous peak of 810m. Founded in the year 795 by the esteemed monk Kobo Daishi, the peaceful temple was referred to as Shikoku Koya, and can be accessed by local road or by pilgrim trails that lead through Oku-Iya and beyond. The temple is a beautiful sight, with its waterfalls, and its surrounding mountains.
- 3 Awa-Ikeda Udausu Streets Tobacco Museum**
The town of Ikeda has a long and proud history of being a hub for the area's tobacco industry. The Tobacco Museum, with its historic architecture, offers a glimpse of the prosperity enjoyed by the old-world traders as it is set in the birthplace home of a 19th century tobacco merchant.
- 4 Kurozo Marshland**
Covering an area of 27 hectares at an altitude of 600m, this otherworldly wetland is home to a wide variety of rare plants and animals. Each month, flowers come into bloom, and the web of walking paths and daily resting spots makes this retreat accessible to all.
- 5 JR Dosan Line Tsubojiri Station**
Located deep in the mountains near the border of Tokushima and Kagawa Prefectures, this station is considered the oldest of the area's railway lines. The station is a beautiful sight, with its waterfalls, and its surrounding mountains.
- 6 Ikawa Ski Resort - Kainayama**
With a panoramic view overlooking the Seto Sea, Ikawa Ski Resort is a beautiful sight, with its waterfalls, and its surrounding mountains.
- 7 Sakuragaoka Park**
This hilltop park is filled with over 1,100 cherry trees that bloom in the main building. The park is a beautiful sight, with its waterfalls, and its surrounding mountains.
- 8 Takiji Temple**
This venerable temple is said to have been established by the monk Kobo Daishi in the year 824 and 828. It is a beautiful sight, with its waterfalls, and its surrounding mountains.
- 9 Ryuzu-no-Taki / Kongo-no-Taki Waterfalls**
It is said that the Ryuzu-no-Taki waterfall was a place of contention. In the remote mountain Kobo Daishi, about 300m away, stands a beautiful sight, with its waterfalls, and its surrounding mountains.
- 10 Momiji Onsen**
This large hot spring bath house is adjacent to the Iya Valley. It is a beautiful sight, with its waterfalls, and its surrounding mountains.
- 11 Roadside Station Mino**
The wide view of the Yoshino River from this roadside station is a beautiful sight, with its waterfalls, and its surrounding mountains.
- 12 Kenko-to-Fureai -no-Mori Park**
This hilltop park is filled with over 1,100 cherry trees that bloom in the main building. The park is a beautiful sight, with its waterfalls, and its surrounding mountains.
- 13 Tsubu Townscape**
Long ago, when a castle here was the main form of transport about the Iya Valley, Tsubu was a port town. As a commercial waterway in the 19th century, tobacco trade, the prosperous residents built lovely homes, many of which still stand today.

- 29 Nature Tourism**
Born of the earth's subterranean movements, landscapes in Miyoshi City witness the change of time over millions of years. As the veins of rifting and waterbedded chambers, the nature here is widely renowned. In Yoshino River, rapid and slow water offer various kinds of water activities. Enjoy outdoor activities in this otherworldly place.
- 30 Roadside Station Oboke**
Located near the heart of the Oboke Gorge, this large rest area is part of the Michi-no-Eki system and offers array of souvenirs and treats, as well as a rock museum full of stunning geological treasures. This is also home to the unique Yokai Museum, which is great for anyone looking for a new experience.
- 31 Mt. Nokanoike**
Rising to a height of 1,294m, the misty perennial forest of this mountain is home to a variety of rare plant species, including the Iyakei. The Iyakei is a beautiful sight, with its waterfalls, and its surrounding mountains.
- 32 Statue of Konaki-jiji**
Konaki-jiji is a famous Yokai monster that was born in the Iyake. The statue is a beautiful sight, with its waterfalls, and its surrounding mountains.
- 33 Ryugatake**
The bold cliff-face of Ryugatake, with its surrounding forest, is a beautiful sight, with its waterfalls, and its surrounding mountains.
- 34 Handa Iwa Rocks**
The practice surroundings of these giant stones are well known for their beauty. Filled with colorful autumn leaves, they are a beautiful sight, with its waterfalls, and its surrounding mountains.
- 35 Shiozuka Highland**
This fantastic 100 hectare plateau is dominated by the tall walls of Shiozuka-mine. Spreading across both Tokushima and Ehime Prefectures, on clear days this lofty area offers views of as far as the Seto Sea and beyond to the north. At night the unobstructed sky explodes with stars, while the early morning provides a chance to see the wondrous aurora (Sea of Clouds). Each spring the area is buried off in a glowing display of swarming fire. Bungee jumps and camping are available along with other outdoor activities.
- 36 Chiiori Trust**
The organization that maintains this 300 year old thatched-roof house is led by its author and East Asia researcher Alan King. The house is a beautiful sight, with its waterfalls, and its surrounding mountains.
- 37 Ryugatake Cottage**
Set in the lovely Ryugatake Park, this secluded apartment building offers a beautiful sight, with its waterfalls, and its surrounding mountains.
- 38 Ochiai Village**
Nationally Important Preservation District for Groups of Traditional Buildings, Ochiai Village is a beautiful sight, with its waterfalls, and its surrounding mountains.

Accommodation Directory

Where to stay if you are in Miyoshi!

A wide range of accommodations are available to suit the desires of every visitor, including campgrounds, family-run guesthouses, traditional inns, thatched roof farmhouses, and relaxing hot spring hotels.

Oboke / Iya Area

- Hotel Iya Onsen 0883-75-2311 Matsudo, Ikeda C-4
- Iyakei Campground 090-9553-3795 Matsudo, Ikeda C-4
- Harekoto Design Hostel 0883-75-2208 Ohi, Ikeda C-3
- Hotel SunRiver Oboke 0883-84-2111 Nishiyu, Yamashiro B-4
- Hotel Oboke-Iyo Mannaka 0883-84-1216 Nishiyu, Yamashiro B-5
- Guesthouse Boku Nouen 090-1578-1611 Kamimyo, Yamashiro B-5
- Smonkey 0883-84-1087 Simomyo, Yamashiro B-5
- Gakko-no-yado Aruse 0883-84-1337 Asoke, Nishiyu C-5
- Hotel Hikyo-no-Yu 0883-87-2300 Onouchi, Nishiyu C-4
- YOKAI Cafe & Guesthouse 0883-86-2334 Ohi, Nishiyu C-4
- Hotel Kazurabashi 0883-87-2171 Zentoku, Nishiyu C-5
- Iya Bijin 0883-87-2009 Zentoku, Nishiyu C-5
- Kazuraya 0883-87-2831 Kanjo, Nishiyu D-5
- Iya Kanko Ryokan 0883-87-2125 Zentoku, Nishiyu C-5
- Minshuku Minami 0883-87-2342 Zentoku, Nishiyu C-5
- Minshuku Iya-so 0883-87-2242 Zentoku, Nishiyu C-5
- Minshuku Oyama-so 0883-87-2133 Kanjo, Nishiyu D-5
- Ku-Nel-Asob 090-6282-3612 Enoki, Nishiyu C-5
- Tabibito-no-yado Nakone 0883-72-5557 Enoki, Nishiyu C-5
- Rental House FOREST 090-9556-4788 Susaeda, Nishiyu C-5
- Iya Fureai Park Campground 0883-76-8585 Onouchi, Nishiyu C-4
- Kazurabashi Campground 090-1571-5258 Kanjo, Nishiyu D-5
- Glamping MATOBA 090-8998-1447 Imakubo, Nishiyu C-5
- Kenni Onsen 0883-86-2982 Kurukawa, Yamashiro B-3
- Guesthouse Kanmanyō 090-9556-4788 Susaeda, Yamashiro B-3
- Backpackers 0883-86-3033 Shirokawa, Yamashiro B-4
- Nenrin 0883-84-1629 Kamimyo, Yamashiro B-4
- Oboke-Akanoya 090-2789-1252 Kamimyo, Yamashiro C-5
- Tenku-no-yado 090-8973-2328 Kamimyo, Yamashiro B-4
- Guesthouse Osakanakuni 0883-86-2086 Otsuki, Yamashiro B-3
- Momonga Village 0883-86-2334 Nobumasa, Yamashiro B-3
- Torinosu Mamaan 0883-86-2650 Ono, Yamashiro B-3
- YAMAYA 0883-86-1898 Okawamochi, Yamashiro B-3
- Shiozuka Highland Campground 0883-86-3077 Tarano, Yamashiro A-4
- Retreat space FUJIWARA 090-4788-0313 Nakano, Yamashiro B-4

Oku-Iya Area

- Maruishi Parkland 0883-88-2768 Sugoi, Higashi-Iya F-5
- Hotel Okuya 0883-88-2045 Kyojo, Higashi-Iya D-5
- Heike-so 0883-88-2848 Kyojo, Higashi-Iya D-5
- Yoshida Ryokan 0883-88-2843 Kyojo, Higashi-Iya D-5

- Mt. Tsurugi Climbing Trailhead About 2 hours by car
- Oku-Iya Niju Kazurabashi (Vine Bridge) About 1 hour 50 minutes by car
- Iya-no-Kazurabashi (Vine Bridge) About 1 hour by car
- Iyakei / Peeling Boy Statue About 50 minutes by car
- Oboke Gorge & Koboko Gorge About 40 minutes by car
- Shiozuka Highland About 1 hour by car
- Kurozo Marshland About 40 minutes by car
- Ikawa Ski Resort - Kainayama About 1 hour by car
- Kenko-to-Fureai-no-Mori Park About 45 minutes by car

- | Taxi | | Bus | |
|------------------|------------------------------------|------------------|--|
| Ikeda | Shikoku Kotsu Bus | TEL:0883-72-2171 | |
| Sankyo Taxi | TEL:0883-72-3300 | | |
| Minawa Taxi | TEL:0883-74-0057 | | |
| Ikeda DK Taxi | TEL:0883-72-3740 | | |
| Yamashiro | Awa-Ikeda Bus Terminal Information | TEL:0883-72-1231 | |
| Oboke Taxi | TEL:0883-84-1225 | | |
| Kawaguchi Taxi | TEL:0883-86-1221 | | |
| Nishiyu | Mino Kotsu Bus | TEL:0883-77-2345 | |
| Iyakei Taxi | TEL:0883-87-2017 | | |
| Kazurabashi Taxi | TEL:0883-87-2013 | | |
| Higashi-Iya | Sennen-Mobi Car Rental | TEL:0883-84-1211 | |
| Miura Taxi | TEL:0883-88-2420 | | |
| | Oboke Car Rental | TEL:0883-84-1211 | |

Map Code Search List

Oboke / Iya Area	Map Code
Iya-no-Kazurabashi (Vine Bridge)	357 130 587 + 55
Kazurabashi Campground	357 161 188 + 71
Iya Fureai Park	357 188 480 + 36
Roadside Station Nishiyu	357 187 260 + 22
Kazurabashi Yume-Butai Stage	357 130 429 + 82
Heike Yashiki Museum	357 154 511 + 41
Furumiya Shrine	357 095 449 + 71
Iyakei / Peeling Boy Statue	357 308 375 + 47
Ryugatake	357 343 433 + 42
Iyakei Campground	357 397 059 + 88
Oboke Gorge	357 151 826 + 18
Koboko Gorge	357 330 837 + 82
Oboke Gorge Pleasure Boat	357 153 854 + 71
Roadside Station Oboke / YOKAI Museum	357 151 315 + 35
Shiozuka Highland	207 352 780 + 36
Shiozuka Campground	207 352 780 + 44
Statue of Konaki-jiji	207 179 407 + 44
Tobinusu Canyon	207 296 696 + 44
Hotan-no-Sato (Firefly Park)	207 415 027 + 50
Handa Iwa Rocks	207 416 625 + 3
Oku-Iya Area	
Minokoshi / Mt. Tsurugi Climbing Trailhead	497 401 602 + 66
Oku-Iya Niju Kazurabashi (Double Vine Bridges)	357 130 556 + 14
Kakashi-no-Sato (Scarecrow Village)	497 362 349 + 36
Bakayashiki Kita-ke (Samurai Residence)	357 137 038 + 04
Kimura-ke Historic Farmhouse	357 104 458 + 88
Koune-ke Historic Farmhouse	357 117 776 + 88
Soba Dojo Noodle Shop	357 172 203 + 47
Ochiai Village	357 172 526 + 60
Ochiai Village Viewpoint	357 142 727 + 71
Hotan-no-Sato (Folklore Museum)	357 109 651 + 66
Tazuki Atelier (Soba Making Workshop)	357 077 559 + 14
Tougenkyo-Iya	357 105 224 + 60
Ryugatake Cottage	357 075 797 + 68
Mt. Miune Climbing Trailhead	357 028 568 + 54
Northern Area	
Matsugawa Onsen	357 498 564 + 23
Kurozo Marshland	357 489 898 + 40
Sueya Park	357 697 350 + 68
Miyoshi City Tourist Information Center	357 666 778 + 82
JR Dosan Line Tsubojiri Station	357 789 064 + 6
Awa-Ikeda Uda Street / Tobacco Museum	357 697 161 + 77
Hashikuraji Temple	357 761 306 + 16
Unpenji Temple	207 717 224 + 14
Ikawa Ski Resort - Kainayama	357 466 164 + 30
Shimokage-no-Tanada (Rice Paddy Terraces)	357 554 579 + 74
Gorako-no-Taki Waterfall	357 588 111 + 06
Sakuragaoka Park	357 703 520 + 41
Kiryusyan Nonon Park	228 000 714 + 34
Koyu-no-Taki Waterfall	228 223 922 + 28
Ryuzu-no-Taki Waterfall	228 233 233 + 36
Hachimai-Nabera Waterfall	228 247 516 + 41
Roadside Station Mino	228 157 725 + 62
Kenko-to-Fureai-no-Mori Park	228 191 618 + 3

Please be careful when driving mountain roads!

When going downhill, shift into low gear.

When going down long hills, it is easy for your car brakes to overheat from overuse. This may cause the brakes to be less effective or for the brakes to fail completely.

Therefore, please use the "engine brake" by shifting into a lower gear and letting the engine resistance help slow the car. By doing so you will not need to use the brakes as much, and it will help maintain cooler brakes.

Take notice of drivers behind you.

On the rural mountain roads there is often less traffic, so you may not notice when drivers approach behind you. Please be sure to check your mirror sometimes to know if other vehicles are present. Also, since you may be driving slowly due to being unfamiliar with the area, please allow other vehicles to pass when it is safely possible.

For current weather information in English: Japan Meteorological Agency <https://www.jma.go.jp/eng/index.html>

For current road conditions and traffic information: Tokushima Prefecture Land Disaster Prevention Information <https://bousai.pref.tokushima.lg.jp/>

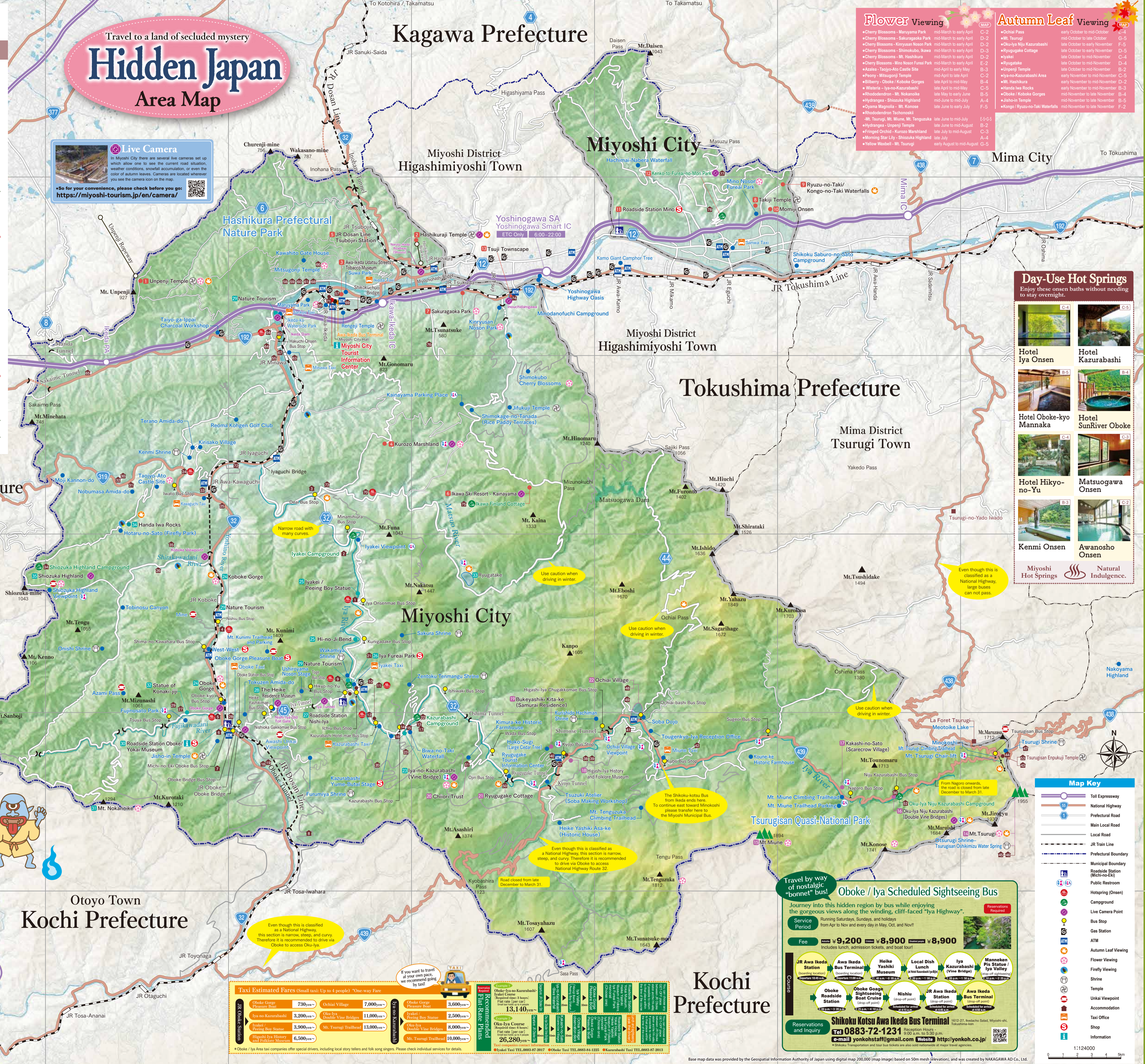
Hidden Japan Area Map

Travel to a land of secluded mystery

Live Camera

In Miyoshi City there are several live cameras set up which allow one to see the current road situation, weather conditions, snowfall accumulation, or even the color of autumn leaves. Cameras are located wherever you see the camera icon on the map.

So for your convenience, please check before you go! <https://miyoshi-tourism.jp/en/camera/>



Flower Viewing

Cherry Blossoms - Maruyama Park	mid-March to early April	C-2
Cherry Blossoms - Sakuragaoka Park	mid-March to early April	D-2
Cherry Blossoms - Kiriyusan Nonon Park	mid-March to early April	D-3
Cherry Blossoms - Shimokubo, Ikawa	mid-March to early April	D-3
Cherry Blossoms - Mt. Hashikura	mid-March to early April	D-2
Cherry Blossoms - Waka-no-Iya-no-Kazurabashi	mid-March to early April	D-2
Rhododendrons - Mt. Nakanishi	late May to early June	B-5
Azalea - Taiyo-Ato Castle Site	mid-April to early May	B-3
Peony - Mitaigono Temple	mid-April to late April	C-2
Bittersweet - Oboke / Koboko Gorges	late April to mid-May	C-4
Wisteria - Iya-no-Kazurabashi	late April to mid-May	C-5
Rhododendrons - Tsubojiri	late May to early June	B-5
Hydrangea - Shiozuka Highland	mid-June to early July	C-2
Oyama Magnolia - Mt. Konoso	late June to early July	E-5/3
Rhododendrons - Tsubojiri	late June to mid-July	E-5/3
Hydrangea - Unpenji Temple	late June to mid-August	B-2
Fringed Orchid - Kurozo Marshland	late July to mid-August	C-3
Worming Star Lily - Shiozuka Highland	early August to mid-August	A-4
Yellow Waxbell - Mt. Tsurugi	early August to mid-August	C-5

Autumn Leaf Viewing

Ochiai Pass	early October to mid-October	C-4
Mt. Tushidake	mid-October to late October	C-5
Oku-Iya Niju Kazurabashi	late October to early November	F-5
Ryugatake Cottage	late October to early November	D-5
Iyakei	late October to mid-November	C-4
Ryugatake	late October to late November	C-4
Unpenji Temple	late October to mid-November	B-2
Iya-no-Kazurabashi Area	early November to mid-November	C-5
Mt. Hashikura	early November to mid-November	D-2
Handa Iwa Rocks	mid-October to late November	C-4
Oboke / Koboko Gorges	mid-November to late November	B-4
Jisho-in Temple	mid-November to late November	B-5
Kongo / Ryuzu-no-Taki Waterfalls	mid-November to late November	F-2

Day-Use Hot Springs

Enjoy these onsen baths without needing to stay overnight.

Hotel Iya Onsen	Hotel Kazurabashi
Hotel Oboke-Iyo Mannaka	Hotel SunRiver Oboke
Hotel Hikyo-no-Yu	Matsugawa Onsen
Kenni Onsen	Awanosho Onsen
Miyoshi Hot Springs	Natural Indulgence

Taxi Estimated Fares (Small taxi: Up to 4 people) *One way fare

Oboke Gorge Pleasure Boat	730yen	Ochiai Village	7,000yen
Oboke Gorge Pleasure Boat	3,000yen	Oboke Gorge Pleasure Boat	3,000yen
Iyakei Peeling Boy Statue	2,500yen	Oboke Gorge Pleasure Boat	3,000yen
Oboke Gorge Pleasure Boat	3,000yen	Oboke Gorge Pleasure Boat	3,000yen
Oboke Gorge Pleasure Boat	3,000yen	Oboke Gorge Pleasure Boat	3,000yen
Oboke Gorge Pleasure Boat	3,000yen	Oboke Gorge Pleasure Boat	3,000yen
Oboke Gorge Pleasure Boat	3,000yen	Oboke Gorge Pleasure Boat	3,000yen
Oboke Gorge Pleasure Boat	3,000yen	Oboke Gorge Pleasure Boat	3,000yen
Oboke Gorge Pleasure Boat	3,000yen	Oboke Gorge Pleasure Boat	3,000yen
Oboke Gorge Pleasure Boat	3,000yen	Oboke Gorge Pleasure Boat	3,000yen

Shikoku Kotsu Awa Ikeda Bus Terminal

Travel by way of nostalgic "bonnet" bus!

Oboko / Iya Scheduled Sightseeing Bus

Journey into this hidden region by bus while enjoying the gorgeous views along the winding, cliff-faced "Iya Highway".

Running Saturdays, Sundays, and holidays from Apr to Nov and every day in May, Oct, and Nov!

Fee: **9,200** (includes lunch, admission tickets, and boat tour) / **8,900** (includes lunch, admission tickets, and boat tour)

Reservations and Inquiry: **0883-72-1231** / info.yonkoshita@gmail.com / <http://www.yonkoshita.co.jp/>

Kochi Prefecture

Base map data was provided by the Geopatial Information Authority of Japan using digital map 200,000 (map image) based on 30m mesh elevation), and was created by NAKAGAWA AD Co., Ltd.